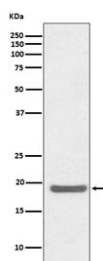


SOD1 Antibody [clone AOEI-19] (RQ4835)

Catalog No.	Formulation	Size
RQ4835	Antibody in PBS with 0.02% sodium azide, 50% glycerol and 0.4-0.5mg/ml BSA	100 ul

[Bulk quote request](#)

Availability	1-2 weeks
Species Reactivity	Human
Format	Purified
Host	Rabbit
Clonality	Rabbit Monoclonal
Isotype	Rabbit IgG
Clone Name	AOEI-19
Purity	Affinity purified
UniProt	P00441
Applications	Western Blot : 1:500-1:2000
Limitations	This SOD1 antibody is available for research use only.



Western blot testing of human Jurkat cell lysate with SOD1 antibody. Predicted molecular weight ~16 kDa.

Description

The protein encoded by this gene binds copper and zinc ions and is one of two isozymes responsible for destroying free superoxide radicals in the body. The encoded isozyme is a soluble cytoplasmic protein, acting as a homodimer to convert naturally-occurring but harmful superoxide radicals to molecular oxygen and hydrogen peroxide. The other isozyme is a mitochondrial protein. Mutations in this gene have been implicated as causes of familial amyotrophic lateral sclerosis. [RefSeq]

Application Notes

Optimal dilution of the SOD1 antibody should be determined by the researcher.

Immunogen

A synthetic peptide specific to human SOD1 was used as the immunogen for the SOD1 antibody.

Storage

Store the SOD1 antibody at -20oC.