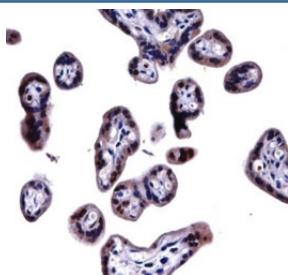


## SOCS6 Antibody (F43534)

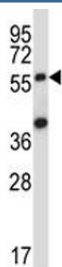
Catalog No.	Formulation	Size
F43534-0.4ML	In 1X PBS, pH 7.4, with 0.09% sodium azide	0.4 ml
F43534-0.08ML	In 1X PBS, pH 7.4, with 0.09% sodium azide	0.08 ml

[Bulk quote request](#)

<b>Availability</b>	1-3 business days
<b>Species Reactivity</b>	Human
<b>Format</b>	Antigen affinity purified
<b>Clonality</b>	Polyclonal (rabbit origin)
<b>Isotype</b>	Rabbit Ig
<b>Purity</b>	Antigen affinity
<b>UniProt</b>	O14544
<b>Applications</b>	Western Blot : 1:1000 IHC (Paraffin) : 1:10-1:50
<b>Limitations</b>	This SOCS6 antibody is available for research use only.



SOCS6 antibody immunohistochemistry analysis in formalin fixed and paraffin embedded human placenta tissue.



SOCS6 antibody western blot analysis in 293 lysate.

## Description

The protein encoded by this gene contains a SH2 domain and a CIS homolog domain. The protein thus belongs to the cytokine-induced STAT inhibitor (CIS), also known as suppressor of cytokine signaling (SOCS) or STAT-induced STAT inhibitor (SSI), protein family. CIS family members are known to be cytokine-inducible negative regulators of cytokine signaling. The expression of this gene can be induced by GM-CSF and EPO in hematopoietic cells. A high expression level of this gene was found in factor-independent chronic myelogenous leukemia (CML) and erythroleukemia (HEL) cell lines.

## Application Notes

Titration of the SOCS6 antibody may be required due to differences in protocols and secondary/substrate sensitivity.

## Immunogen

A portion of amino acids 40-69 from the human protein was used as the immunogen for this SOCS6 antibody.

## Storage

Aliquot the SOCS6 antibody and store frozen at -20oC or colder. Avoid repeated freeze-thaw cycles.