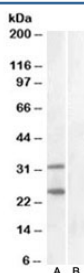


SOCS1 Antibody (R36335)

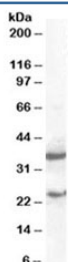
Catalog No.	Formulation	Size
R36335-100UG	0.5 mg/ml in 1X TBS, pH7.3, with 0.5% BSA (US sourced) and 0.02% sodium azide	100 ug

[Bulk quote request](#)

Availability	1-3 business days
Species Reactivity	Human, Mouse
Predicted Reactivity	Rat, Dog, Cow
Format	Antigen affinity purified
Clonality	Polyclonal (goat origin)
Isotype	Goat Ig
Purity	Antigen affinity
Gene ID	8651
Applications	Western Blot : 1-3ug/ml ELISA (peptide) LOD : 1:32000
Limitations	This SOCS1 antibody is available for research use only.



Western blot of HEK293 lysate overexpressing human SOCS1 and tested with SOCS1 antibody at 1ug/ml (mock transfection in lane B). Similar banding pattern is seen in mouse spleen. Predicted molecular weight ~24 kDa, but also may be visualized at ~37 kDa.



Western blot of mouse spleen lysate with SOCS1 antibody at 2ug/ml. Similar banding pattern seen in transfected cell lysate. Predicted molecular weight ~24 kDa, but also may be visualized at ~37 kDa.

Description

Additional name(s) for this target protein: Suppressor of cytokine signaling 1; SSI1; TIP3

Application Notes

Optimal dilution of the SOCS1 antibody should be determined by the researcher.

Immunogen

Amino acids VLRDYLSSFPFQI were used as the immunogen for this SOCS1 antibody.

Storage

Aliquot and store the SOCS1 antibody at -20oC.