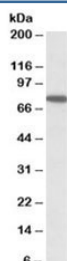


## SNX1 Antibody (R36236)

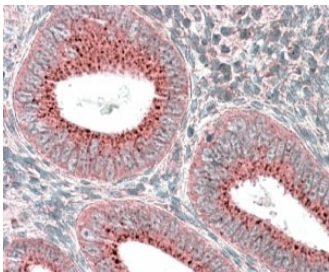
Catalog No.	Formulation	Size
R36236-100UG	0.5 mg/ml in 1X TBS, pH7.3, with 0.5% BSA (US sourced) and 0.02% sodium azide	100 ug

[Bulk quote request](#)

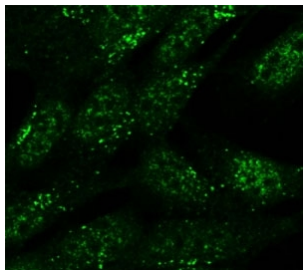
Availability	1-3 business days
Species Reactivity	Human
Predicted Reactivity	Cow, Dog, Mouse, Rat
Format	Antigen affinity purified
Host	Goat
Clonality	Polyclonal (goat origin)
Isotype	Goat Ig
Purity	Antigen affinity
Gene ID	6642
Applications	Western Blot : 1-3ug/ml Immunohistochemistry (FFPE) : 3-6ug/ml ELISA (peptide) LOD : 1:64000
Limitations	This SNX1 antibody is available for research use only.



Western blot testing of HeLa lysate with SNX1 antibody at 1ug/ml. Predicted molecular weight: ~59kDa, routinely observed at 70~78kDa.



IHC staining of FFPE human uterus with SNX1 antibody. HIER: steamed with pH6 citrate buffer, AP-staining.



SNX1 antibody (5ug/ml) staining of formaldehyde-fixed SH5Y5Y cells detected with Alexa Fluor 488 in confocal microscopy.

## Description

Additional name(s) for this target protein: Sorting nexin 1

## Application Notes

Optimal dilution of the SNX1 antibody should be determined by the researcher.

1. This SNX1 antibody is specific for isoforms a and c.

## Immunogen

Amino acids TNSSKPQPTYEELE were used as the immunogen for this SNX1 antibody.

## Storage

Aliquot and store the SNX1 antibody at -20oC.