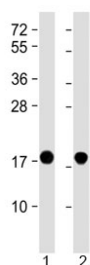


SNCA Antibody / Alpha-Synuclein [clone 1853CT506.24.16] (F54196)

Catalog No.	Formulation	Size
F54196-0.2ML	In 1X PBS, pH 7.4, with 0.09% sodium azide	0.2 ml
F54196-0.05ML	In 1X PBS, pH 7.4, with 0.09% sodium azide	0.05 ml

[Bulk quote request](#)

Availability	1-3 business days
Species Reactivity	Human, Mouse
Format	Purified
Host	Mouse
Clonality	Monoclonal (mouse origin)
Isotype	IgG1, kappa
Clone Name	1853CT506.24.16
Purity	Protein G purified
UniProt	P37840
Applications	Western Blot : 1:1000-1:2000
Limitations	This SNCA antibody is available for research use only.



Western blot testing of 1) human brain and 2) mouse brain lysate with SNCA antibody at 1:2000. Predicted molecular weight ~15 kDa.

Description

Synuclein alpha (SNCA) may be involved in the regulation of dopamine release and transport. Induces fibrillization of microtubule-associated protein tau. Reduces neuronal responsiveness to various apoptotic stimuli, leading to a decreased caspase-3 activation.

Application Notes

The stated application concentrations are suggested starting points. Titration of the SNCA antibody may be required due to differences in protocols and secondary/substrate sensitivity.

Immunogen

Recombinant human SNCA protein was used as the immunogen for the SNCA antibody.

Storage

Aliquot the SNCA antibody and store frozen at -20oC or colder. Avoid repeated freeze-thaw cycles.