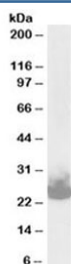


SNAP25 Antibody (R33407)

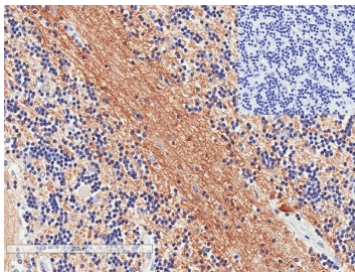
Catalog No.	Formulation	Size
R33407-100UG	0.5 mg/ml in 1X TBS, pH7.3, with 0.5% BSA (US sourced) and 0.02% sodium azide	100 ug

[Bulk quote request](#)

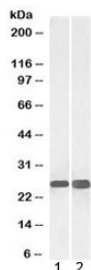
Availability	1-3 business days
Species Reactivity	Human, Mouse
Predicted Reactivity	Rat, Dog
Format	Antigen affinity purified
Host	Goat
Clonality	Polyclonal (goat origin)
Isotype	Goat Ig
Purity	Antigen affinity
Gene ID	6616
Localization	Cell membrane
Applications	Western Blot : 0.01-0.03ug/ml Immunohistochemistry (FFPE) : 2-4ug/ml ELISA (peptide) LOD : 1:32000
Limitations	This SNAP25 antibody is available for research use only.



Western blot testing of mouse brain lysate with SNAP25 antibody at 0.03ug/ml.
Expected molecular weight: ~25 kDa.



IHC staining of FFPE human cerebellum tissue with (left) and without (right) SNAP25 antibody at 1ug/ml. HIER: steamed with pH6 citrate buffer, HRP-staining.



Western blot testing of 1) human cerebellum and 2) mouse brain lysate with SNAP25 antibody at 0.03ug/ml. Expected molecular weight: ~25 kDa.

Description

Additional name(s) for this target protein: Synaptosomal-associated protein, 25kDa

Application Notes

Optimal dilution of the SNAP25 antibody should be determined by the researcher.

Immunogen

Amino acids DEANQRATKMLGSG were used as the immunogen for this SNAP25 antibody.

Storage

Aliquot and store the SNAP25 antibody at -20oC.