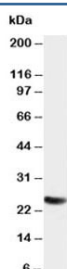


## SNAP25 Antibody (R30373)

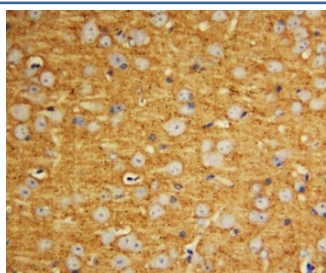
Catalog No.	Formulation	Size
R30373	0.5mg/ml if reconstituted with 0.2ml sterile DI water	100 ug

**Bulk quote request**

<b>Availability</b>	1-3 business days
<b>Species Reactivity</b>	Human, Mouse, Rat
<b>Format</b>	Antigen affinity purified
<b>Clonality</b>	Polyclonal (rabbit origin)
<b>Isotype</b>	Rabbit IgG
<b>Purity</b>	Antigen affinity
<b>Buffer</b>	Lyophilized from 1X PBS with 2.5% BSA and 0.025% sodium azide/thimerosal
<b>UniProt</b>	P60880
<b>Applications</b>	Western Blot : 0.5-1ug/ml IHC (FFPE) : 0.5-1ug/ml
<b>Limitations</b>	This SNAP25 antibody is available for research use only.



Western blot testing of SNAP25 antibody and rat brain tissue lysate. Expected molecular weight ~25 kDa.



IHC-P: SNAP25 antibody testing of rat brain tissue

## Description

Synaptosome-associated protein of 25,000 daltons also known as SNAP-25 is a protein which in humans encodes a 25-kD protein of 206 amino acids. It was first investigated as a neuron-specific gene preferentially expressed in mouse hippocampus. The tSNARE (the target-membrane soluble NSF-attachment protein receptor, where NSF is N-ethylmaleimide-sensitive fusion protein) synaptosomal-associated protein of 25 kDa (SNAP-25) is expressed in pancreatic B-cells and its cleavage by botulinum neurotoxin E (BoNT/E) abolishes stimulated secretion of insulin. In the nervous system, two SNAP-25 isoforms (a and b) have been described, which are produced by alternative splicing. Nagy et al. (2004) identified mammalian Snap25a and Snap25b as targets of protein kinase A, a key regulator of neurosecretion that primes slowly releasable pools and readily releasable pools of secretory vesicles. SNAP-25 inhibits P/Q- and L-type voltage-gated calcium channels located presynaptically and interacts with the synaptotagmin C2B domain in  $\text{Ca}^{2+}$ -independent fashion. In glutamatergic synapses SNAP-25 decreases the  $\text{Ca}^{2+}$  responsiveness, while it is naturally absent in GABAergic synapses.

## Application Notes

The stated application concentrations are suggested starting amounts. Titration of the SNAP25 antibody may be required due to differences in protocols and secondary/substrate sensitivity.

## Immunogen

An amino acid sequence from the C-terminus of human SNAP25 (DSNKTRIDEANQRAT) was used as the immunogen for this SNAP25 antibody (100% homologous in human, mouse and rat).

## Storage

After reconstitution, the SNAP25 antibody can be stored for up to one month at 4°C. For long-term, aliquot and store at -20°C. Avoid repeated freezing and thawing.