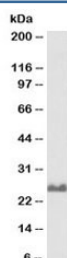


## SNAP25 Antibody Biotin Conjugate (R33407BTN)

Catalog No.	Formulation	Size
R33407BTN	0.5 mg/ml in 1X TBS, pH7.3, with 0.5% BSA (US sourced) and 0.02% sodium azide	100 ug

[Bulk quote request](#)

Availability	1-3 business days
Species Reactivity	Human, Mouse
Predicted Reactivity	Dog, Rat
Format	Biotin Conjugate
Host	Goat
Clonality	Polyclonal (goat origin)
Isotype	Goat Ig
Purity	Antigen affinity
Gene ID	6616
Applications	Western Blot : 0.1-0.3ug/ml Immunohistochemistry (FFPE) : suitable ELISA (peptide) LOD : 1:64000
Limitations	This SNAP25 antibody is available for research use only.



Western blot testing of rat brain lysate with biotinylated SNAP25 antibody at 0.1ug/ml.  
Expected molecular weight: ~25kDa.

### Description

Additional name(s) for this target protein: Synaptosomal-associated protein, 25kDa

### Application Notes

Optimal dilution of the SNAP25 antibody should be determined by the researcher.

## **Immunogen**

Amino acids DEANQRATKMLGSG were used as the immunogen for this SNAP25 antibody.

## **Storage**

Aliquot and store the SNAP25 antibody at -20oC.