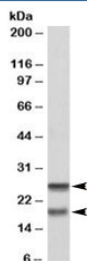


SNAP23 Antibody (R36143)

Catalog No.	Formulation	Size
R36143-100UG	0.5 mg/ml in 1X TBS, pH7.3, with 0.5% BSA (US sourced) and 0.02% sodium azide	100 ug

[Bulk quote request](#)

Availability	1-3 business days
Species Reactivity	Human
Predicted Reactivity	Cow, Dog, Mouse, Rabbit, Rat
Format	Antigen affinity purified
Host	Goat
Clonality	Polyclonal (goat origin)
Isotype	Goat Ig
Purity	Antigen affinity
Gene ID	8773
Applications	Western Blot : 0.2-0.6ug/ml ELISA (peptide) LOD : 1:2000
Limitations	This SNAP23 antibody is available for research use only.



Western blot testing of PBMC lysate with SNAP23 antibody at 0.2ug/ml. Expected molecular weight: ~23/18kDa (isoforms 1/2).

Description

Additional name(s) for this target protein: Synaptosomal-associated protein, 23kDa

Application Notes

Optimal dilution of the SNAP23 antibody should be determined by the researcher.

Immunogen

Amino acids TDKADTNRDR were used as the immunogen for this SNAP23 antibody. This sequence is common to isoforms 1 and 2.

Storage

Aliquot and store the SNAP23 antibody at -20oC.