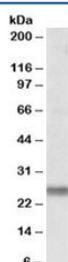


## SNAP23 Antibody (R35304)

Catalog No.	Formulation	Size
R35304-100UG	0.5 mg/ml in 1X TBS, pH7.3, with 0.5% BSA (US sourced) and 0.02% sodium azide	100 ug

[Bulk quote request](#)

Availability	1-3 business days
Species Reactivity	Human
Predicted Reactivity	Cow, Mouse, Rat
Format	Antigen affinity purified
Clonality	Polyclonal (goat origin)
Isotype	Goat Ig
Purity	Antigen affinity
Gene ID	8773
Applications	Western Blot : 0.1-0.3ug/ml ELISA (peptide) LOD : 1:8000
Limitations	This SNAP23 antibody is available for research use only.



Western blot testing of human placenta lysate with SNAP23 antibody at 0.1ug/ml.  
Expected molecular weight: ~23/18kDa (isoforms 1/2).

## Description

Additional name(s) for this target protein: Synaptosomal-associated protein, 23kDa

## Application Notes

Optimal dilution of the SNAP23 antibody should be determined by the researcher.

## Immunogen

Amino acids QIKRITDKAD were used as the immunogen for this SNAP23 antibody. This sequence is common to isoforms 1 and 2.

## Storage

Aliquot and store the SNAP23 antibody at -20oC.