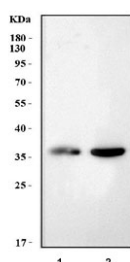


Snap beta Antibody / Napb (RQ8269)

Catalog No.	Formulation	Size
RQ8269	0.5mg/ml if reconstituted with 0.2ml sterile DI water	100 ug

Bulk quote request

Availability	1-3 business days
Species Reactivity	Mouse, Rat
Format	Antigen affinity purified
Clonality	Polyclonal
Isotype	Rabbit IgG
Purity	Antigen affinity purified
Buffer	Lyophilized from 1X PBS with 2% Trehalose
UniProt	Q9H115
Applications	Western Blot : 0.5-1ug/ml
Limitations	This Snap beta antibody is available for research use only.



Western blot testing of 1) rat brain and 2) mouse brain tissue lysate with Snap beta antibody. Predicted molecular weight ~34 kDa.

Description

Beta-soluble NSF attachment protein is a SNAP protein involved in vesicular trafficking and exocytosis which is encoded by the NAPB gene humans is. This gene encodes a member of the soluble N-ethyl-maleimide-sensitive fusion attachment protein (SNAP) family. SNAP proteins play a critical role in the docking and fusion of vesicles to target membranes as part of the 20S NSF-SNAP-SNARE complex. This gene encodes the SNAP beta isoform which has been shown to be preferentially expressed in brain tissue. The encoded protein also interacts with the GluR2 -amino-3-hydroxy-5-methyl-4-isoxazolepropionate (AMPA) receptor subunit C-terminus and may play a role as a chaperone in the molecular processing of the AMPA receptor.

Application Notes

Optimal dilution of the Snap beta antibody should be determined by the researcher.

Immunogen

Amino acids CEREAVQLMAEAEKRVKASHSFLR were used as the immunogen for the Snap beta antibody.

Storage

After reconstitution, the Snap beta antibody can be stored for up to one month at 4oC. For long-term, aliquot and store at -20oC. Avoid repeated freezing and thawing.