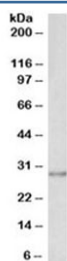


SNAIL Antibody (R35656)

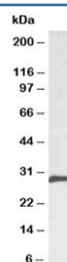
Catalog No.	Formulation	Size
R35656-100UG	0.5 mg/ml in 1X TBS, pH7.3, with 0.5% BSA (US sourced) and 0.02% sodium azide	100 ug

[Bulk quote request](#)

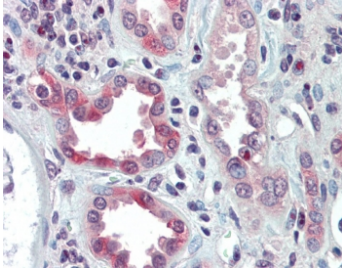
Availability	1-3 business days
Species Reactivity	Human, Rat
Predicted Reactivity	Mouse
Format	Antigen affinity purified
Clonality	Polyclonal (goat origin)
Isotype	Goat Ig
Purity	Antigen affinity
Gene ID	6615
Applications	Western Blot : 0.1-0.3ug/ml IHC (FFPE) : 5ug/ml ELISA (peptide) LOD : 1:128000
Limitations	This SNAIL antibody is available for research use only.



Western blot testing of human A431 lysate with SNAIL antibody at 0.1ug/ml. Predicted molecular weight ~29 kDa.



Western blot testing of rat kidney lysate with SNAIL antibody at 0.1ug/ml. Predicted molecular weight ~29 kDa.



IHC testing of FFPE human kidney tissue with SNAIL antibody at 5ug/ml. Required HIER: steamed antigen retrieval with pH6 citrate buffer; AP-staining.

Description

Additional name(s) for this target protein: SNAI1, SLUGH2, SNA, SNAH

Application Notes

Optimal dilution of the SNAIL antibody should be determined by the researcher.

Immunogen

Amino acids RKPSDPNRKPNY were used as the immunogen for this SNAIL antibody.

Storage

Aliquot and store the SNAIL antibody at -20oC.