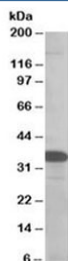


SMUG1 Antibody (R35105)

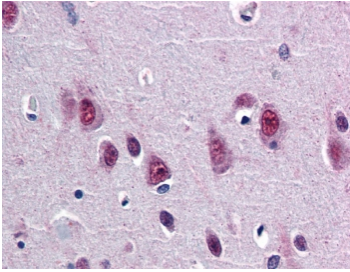
Catalog No.	Formulation	Size
R35105-100UG	0.5 mg/ml in 1X TBS, pH7.3, with 0.5% BSA (US sourced) and 0.02% sodium azide	100 ug

[Bulk quote request](#)

Availability	1-3 business days
Species Reactivity	Human
Format	Antigen affinity purified
Host	Goat
Clonality	Polyclonal (goat origin)
Isotype	Goat Ig
Purity	Antigen affinity
Gene ID	23583
Localization	Nuclear
Applications	Western Blot : 0.5-1.5ug/ml IHC (FFPE) : 5ug/ml ELISA (peptide) LOD : 1:32000
Limitations	This SMUG1 antibody is available for research use only.



Western blot testing of MOLT4 lysate with SMUG1 antibody at 0.5ug/ml. Predicted molecular weight: ~31 kDa.



IHC testing of FFPE human brain cortex tissue with SMUG1 antibody at 5ug/ml.
Required HIER: steamed antigen retrieval with pH6 citrate buffer; AP-staining.

Description

Additional name(s) for this target protein: Single-strand-selective monofunctional uracil-DNA glycosylase 1

Application Notes

Optimal dilution of the SMUG1 antibody should be determined by the researcher.

Immunogen

Amino acids PQAFLLSIHEPA were used as the immunogen for this SMUG1 antibody.

Storage

Aliquot and store the SMUG1 antibody at -20oC.