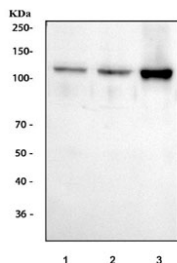


Smoothelin Antibody / SMSMO / SMTN (RQ4473)

Catalog No.	Formulation	Size
RQ4473	0.5mg/ml if reconstituted with 0.2ml sterile DI water	100 ug

[Bulk quote request](#)

Availability	1-3 business days
Species Reactivity	Human
Format	Antigen affinity purified
Host	Rabbit
Clonality	Polyclonal (rabbit origin)
Isotype	Rabbit IgG
Purity	Antigen affinity
Buffer	Lyophilized from 1X PBS with 2% Trehalose and 0.025% sodium azide
UniProt	P53814
Localization	Cytoplasm (Actin filaments), Nucleus
Applications	Western Blot : 0.5-1ug/ml
Limitations	This Smoothelin antibody is available for research use only.



Western blot testing of human 1) HeLa, 2) COLO-320 and 3) SW620 cell lysate with Smoothelin antibody at 0.5ug/ml. Predicted molecular weight ~99 kDa but commonly observed at ~110 kDa (long form).

Description

Smoothelin is a protein that in humans is encoded by the SMTN gene. This gene encodes a structural protein that is found exclusively in contractile smooth muscle cells. It associates with stress fibers and constitutes part of the cytoskeleton. This gene is localized to chromosome 22q12.3, distal to the TUPLE1 locus and outside the DiGeorge syndrome deletion. Alternative splicing of this gene results in multiple transcript variants encoding distinct isoforms.

Application Notes

Optimal dilution of the Smoothelin antibody should be determined by the researcher.

Immunogen

Amino acids QELEREEALASKRFRAERQDNKENWLHSQQREAEQR were used as the immunogen for the Smoothelin antibody. This sequence is specific to the long form but not found in the short form of the protein.

Storage

After reconstitution, the Smoothelin antibody can be stored for up to one month at 4oC. For long-term, aliquot and store at -20oC. Avoid repeated freezing and thawing.