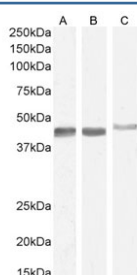


Smooth muscle alpha-Actin Antibody (R33746)

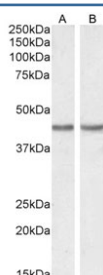
Catalog No.	Formulation	Size
R33746-100UG	0.5 mg/ml in 1X TBS, pH7.3, with 0.5% BSA (US sourced) and 0.02% sodium azide	100 ug

[Bulk quote request](#)

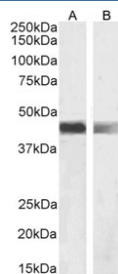
Availability	1-3 business days
Species Reactivity	Human, Mouse, Rat
Format	Antigen affinity purified
Host	Goat
Clonality	Polyclonal (goat origin)
Isotype	Goat Ig
Purity	Antigen affinity
Gene ID	59
Applications	Western Blot : 0.3-1ug/ml ELISA (peptide) LOD : 1:16000
Limitations	This Smooth muscle alpha-Actin antibody is available for research use only.



Western blot testing of A) human duodenum, B) mouse duodenum and C) rat duodenum lysate with Smooth muscle alpha Actin antibody. Predicted molecular weight: ~42 kDa.



Western blot testing of A) human HeLa and B) mouse NIH 3T3 cell lysate with Smooth muscle alpha Actin antibody. Predicted molecular weight: ~42 kDa.



Western blot testing of A) human duodenum and B) rat heart tissue lysate with Smooth muscle alpha Actin antibody. Predicted molecular weight: ~42 kDa.

Description

Additional name(s) for this target protein: ACTA2

Application Notes

Optimal dilution of the Smooth muscle alpha-Actin antibody should be determined by the researcher.

Immunogen

Amino acids EEEDSTALVC were used as the immunogen for this Smooth muscle alpha-Actin antibody.

Storage

Aliquot and store the Smooth muscle alpha-Actin antibody at -20oC.