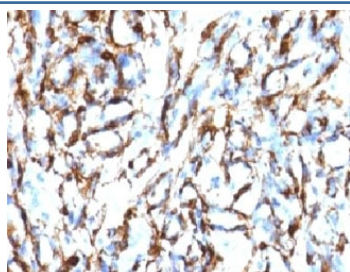


Smooth Muscle Actin Antibody [clone SMAT2-1] (V7150)

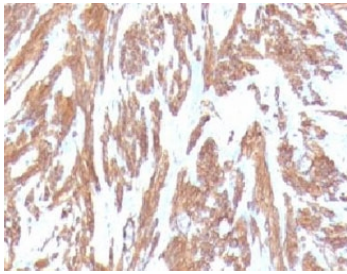
Catalog No.	Formulation	Size
V7150-100UG	0.2 mg/ml in 1X PBS with 0.1 mg/ml BSA (US sourced) and 0.05% sodium azide	100 ug
V7150-20UG	0.2 mg/ml in 1X PBS with 0.1 mg/ml BSA (US sourced) and 0.05% sodium azide	20
V7150SAF-100UG	1 mg/ml in 1X PBS; BSA free, sodium azide free	100
V7150IHC-7ML	Prediluted in 1X PBS with 0.1 mg/ml BSA (US sourced) and 0.05% sodium azide; *For IHC use only*	7

[Bulk quote request](#)

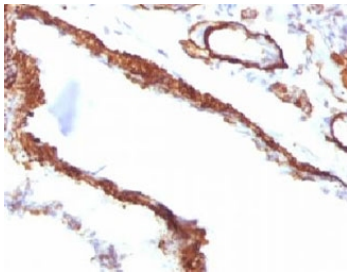
Availability	1-3 business days
Species Reactivity	Human, Rat
Format	Purified
Host	Mouse
Clonality	Monoclonal (mouse origin)
Isotype	Mouse IgG2a, kappa
Clone Name	SMAT2-1
Purity	Protein G affinity chromatography
UniProt	P62736
Localization	Cytoplasmic
Applications	Immunofluorescence : 1-2ug/ml Immunohistochemistry (FFPE) : 0.5-1ug/ml for 30 min at RT Prediluted IHC Only Format : incubate for 30 min at RT (1)
Limitations	This Smooth Muscle Actin antibody is available for research use only.



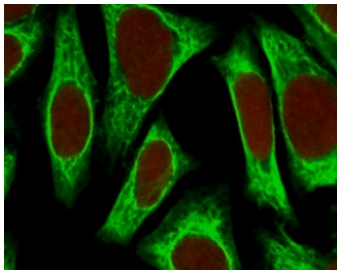
IHC testing of FFPE human angiosarcoma with Smooth Muscle Actin antibody (clone SMAT2-1). Staining of formalin-fixed tissues requires boiling tissue sections in pH 9 10mM Tris with 1mM EDTA for 10-20 min followed by cooling at RT for 20 min.



IHC testing of FFPE human leiomyosarcoma with Smooth Muscle Actin antibody (clone SMAT2-1). Staining of formalin-fixed tissues requires boiling tissue sections in pH 9 10mM Tris with 1mM EDTA for 10-20 min followed by cooling at RT for 20 min.



IHC testing of FFPE rat lung with Smooth Muscle Actin antibody (clone SMAT2-1). Staining of formalin-fixed tissues requires boiling tissue sections in pH 9 10mM Tris with 1mM EDTA for 10-20 min followed by cooling at RT for 20 min.



Immunofluorescent staining of permeabilized human HeLa cells with Smooth Muscle Actin antibody (green, clone SMAT2-1) and Reddot nuclear stain (red).

Description

Actins are a family of proteins which are highly conserved and play a role in cell motility, structure and integrity. Alpha, beta and gamma actin isoforms have been identified, with alpha actins being a major constituent of the contractile apparatus, while beta and gamma actins are involved in the regulation of cell motility. [RefSeq]

Application Notes

Optimal dilution of the Smooth Muscle Actin antibody should be determined by the researcher.

1. The prediluted format is supplied in a dropper bottle and is optimized for use in IHC. After epitope retrieval step (if required), drip mAb solution onto the tissue section and incubate at RT for 30 min.

Immunogen

Recombinant full-length human ACTA2 protein was used as the immunogen for the Smooth Muscle Actin antibody.

Storage

Store the Smooth Muscle Actin antibody at 2-8°C (with azide) or aliquot and store at -20°C or colder (without azide).

