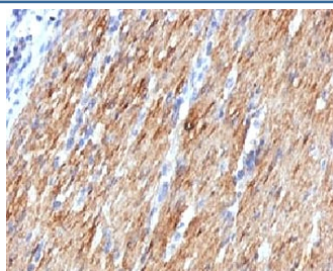


SMMHC Antibody [clone MYH11/923] (V2751)

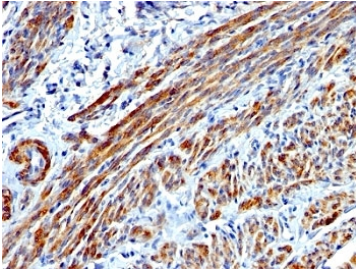
| Catalog No. | Formulation | Size |
|----------------|---|--------|
| V2751-100UG | 0.2 mg/ml in 1X PBS with 0.1 mg/ml BSA (US sourced) and 0.05% sodium azide | 100 ug |
| V2751-20UG | 0.2 mg/ml in 1X PBS with 0.1 mg/ml BSA (US sourced) and 0.05% sodium azide | 20 ug |
| V2751SAF-100UG | 1 mg/ml in 1X PBS; BSA free, sodium azide free | 100 ug |
| V2751IHC-7ML | Prediluted in 1X PBS with 0.1 mg/ml BSA (US sourced) and 0.05% sodium azide; *For IHC use only* | 7 ml |

[Bulk quote request](#)

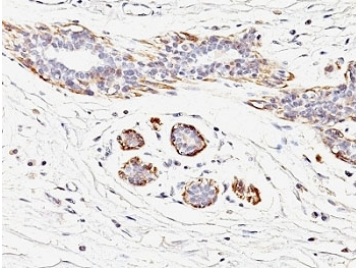
| | |
|---------------------------|---|
| Availability | 1-3 business days |
| Species Reactivity | Human |
| Format | Purified |
| Clonality | Monoclonal (mouse origin) |
| Isotype | Mouse IgG1, kappa |
| Clone Name | MYH11/923 |
| Purity | Protein G affinity chromatography |
| UniProt | P35749 |
| Localization | Cytoplasmic |
| Applications | Immunohistochemistry (FFPE) : 1-2ug/ml for 30 min at RT |
| Limitations | This SMMHC antibody is available for research use only. |



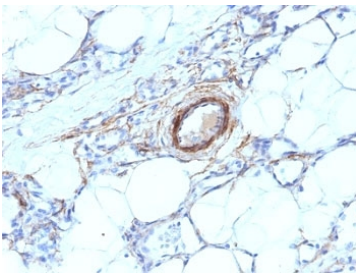
IHC: Formalin-fixed, paraffin-embedded human colon carcinoma stained with SMMHC antibody (MYH11/923).



IHC: Formalin-fixed, paraffin-embedded human Leiomyosarcoma stained with SMMHC antibody (MYH11/923).



IHC: Formalin-fixed, paraffin-embedded human breast carcinoma stained with SMMHC antibody (MYH11/923).



IHC: Formalin-fixed, paraffin-embedded human angiosarcoma stained with SMMHC antibody (MYH11/923).

Description

Smooth muscle myosin heavy chain (SM-MHC) is a cytoplasmic structural protein, which is a major component of the contractile apparatus in smooth muscle cells. Expression of smooth muscle myosin is developmentally regulated, appearing early in smooth muscle development, and is specific for smooth muscle development. Two isoforms of smooth muscle myosin heavy chain have been identified, designated MHC-1 and MHC-2. The antibody may be useful for the study of breast tumors as the presence of an intact layer of myoepithelial cells is an important feature, which may distinguish benign breast lesions and carcinoma in situ from invasive tumors.

Application Notes

Optimal dilution of the SMMHC antibody should be determined by the researcher.

1. Staining of formalin/paraffin tissues requires boiling tissue sections in pH 9 10mM Tris with 1mM EDTA for 10-20 min followed by cooling at RT for 20 min.
2. The prediluted format is supplied in a dropper bottle and is optimized for use in IHC. After epitope retrieval step (if required), drip mAb solution onto the tissue section and incubate at RT for 30 min.

Immunogen

Recombinant human protein was used as the immunogen for the SMMHC antibody.

Storage

Store the SMMHC antibody at 2-8oC (with azide) or aliquot and store at -20oC or colder (without azide).

