

SMEK1 Antibody (R33943)

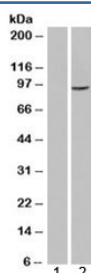
Catalog No.	Formulation	Size
R33943-100UG	0.5 mg/ml in 1X TBS, pH7.3, with 0.5% BSA (US sourced) and 0.02% sodium azide	100 ug

[Bulk quote request](#)

Availability	1-3 business days
Species Reactivity	Human
Predicted Reactivity	Dog, Mouse, Rat
Format	Antigen affinity purified
Host	Goat
Clonality	Polyclonal (goat origin)
Isotype	Goat Ig
Purity	Antigen affinity
Gene ID	55671
Applications	Western Blot : 0.3-1ug/ml ELISA (peptide) LOD : 1:16000
Limitations	This SMEK1 antibody is available for research use only.



Western blot testing of human pancreas lysate with SMEK1 antibody at 0.3ug/ml. Predicted molecular weight: ~94kDa, observed here at ~110kDa.



Western blot of HEK293 lysate overexpressing SMEK1 probed with SMEK1 antibody (mock transfection in lane 1). Predicted molecular weight: ~94kDa.

Description

Additional name(s) for this target protein: Suppressor of mek1

Application Notes

Optimal dilution of the SMEK1 antibody should be determined by the researcher.

Immunogen

Amino acids EQQRERQDNPKLD were used as the immunogen for this SMEK1 antibody.

Storage

Aliquot and store the SMEK1 antibody at -20oC.