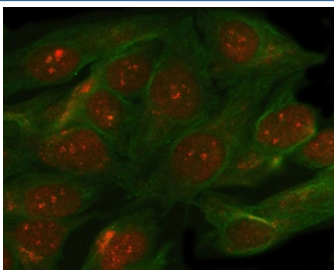


## SMC5 Antibody / Structural maintenance of chromosomes protein 5 (RQ7720)

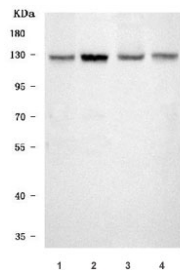
Catalog No.	Formulation	Size
RQ7720	0.5mg/ml if reconstituted with 0.2ml sterile DI water	100 ug

**Bulk quote request**

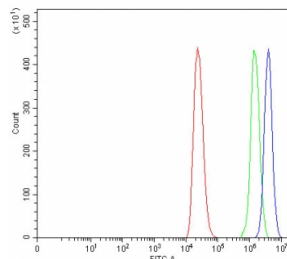
<b>Availability</b>	1-3 business days
<b>Species Reactivity</b>	Human, Mouse, Rat
<b>Format</b>	Antigen affinity purified
<b>Clonality</b>	Polyclonal (rabbit origin)
<b>Isotype</b>	Rabbit IgG
<b>Purity</b>	Antigen affinity purified
<b>Buffer</b>	Lyophilized from 1X PBS with 2% Trehalose
<b>UniProt</b>	Q8IY18
<b>Localization</b>	Nuclear
<b>Applications</b>	Western Blot : 0.5-1ug/ml Flow Cytometry : 1-3ug/million cells Direct ELISA : 0.1-0.5ug/ml
<b>Limitations</b>	This SMC5 antibody is available for research use only.



Immunofluorescent staining of FFPE human HeLa cells with SMC5 antibody (red) and Beta Tubulin mAb (green). HIER: steam section in pH6 citrate buffer for 20 min.



Western blot testing of 1) human HeLa, 2) human MOLT4, 3) rat testis and 4) mouse NIH 3T3 cell lysate with SMC5 antibody. Predicted molecular weight ~129 kDa.



Flow cytometry testing of human THP-1 cells with SMC5 antibody at 1ug/million cells (blocked with goat sera); Red=cells alone, Green=isotype control, Blue= SMC5 antibody.

## Description

Structural maintenance of chromosomes protein 5 is a protein encoded by the SMC5 gene in human. Predicted to enable ATP binding activity. Involved in several processes, including DNA recombination; cellular senescence; and positive regulation of maintenance of mitotic sister chromatid cohesion. Located in cell junction; chromosome; and nuclear body. Part of Smc5-Smc6 complex.

## Application Notes

Optimal dilution of the SMC5 antibody should be determined by the researcher.

## Immunogen

E. coli-derived recombinant human protein (amino acids Q14-Q1089) was used as the immunogen for the SMC5 antibody.

## Storage

After reconstitution, the SMC5 antibody can be stored for up to one month at 4oC. For long-term, aliquot and store at -20oC. Avoid repeated freezing and thawing.