

SMC3 Antibody (R32356)

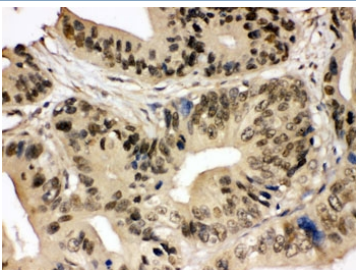
Catalog No.	Formulation	Size
R32356	0.5mg/ml if reconstituted with 0.2ml sterile DI water	100 ug

[Bulk quote request](#)

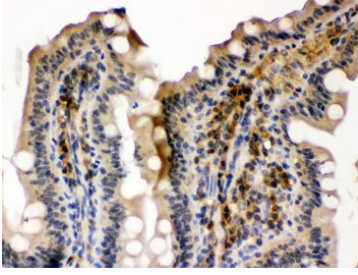
Availability	1-3 business days
Species Reactivity	Human, Mouse, Rat
Format	Antigen affinity purified
Host	Rabbit
Clonality	Polyclonal (rabbit origin)
Isotype	Rabbit IgG
Purity	Antigen affinity
Buffer	Lyophilized from 1X PBS with 2.5% BSA and 0.025% sodium azide
UniProt	Q9UQE7
Localization	Nuclear, cytoplasmic
Applications	Western Blot : 0.1-0.5ug/ml IHC (FFPE) : 0.5-1ug/ml
Limitations	This SMC3 antibody is available for research use only.



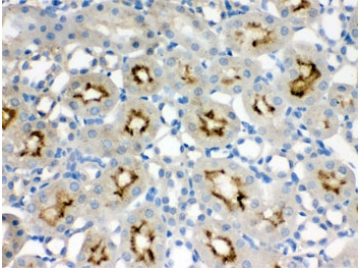
Western blot testing of 1) rat brain, 2) rat liver, 3) rat testis, 4) human HeLa, 5) human A549, 6) human MCF7 and 7) mouse NIH3T3 lysate with SMC3 antibody. Expected/observed molecular weight ~141 kDa.



IHC testing of FFPE human intestinal cancer tissue with SMC3 antibody. HIER: Boil the paraffin sections in pH 6, 10mM citrate buffer for 20 minutes and allow to cool prior to staining.



IHC testing of FFPE mouse intestine with SMC3 antibody. HIER: Boil the paraffin sections in pH 6, 10mM citrate buffer for 20 minutes and allow to cool prior to staining.



IHC testing of FFPE rat kidney with SMC3 antibody. HIER: Boil the paraffin sections in pH 6, 10mM citrate buffer for 20 minutes and allow to cool prior to staining.

Description

Structural maintenance of chromosomes 3 belongs to the SMC3 subfamily of SMC proteins. The encoded protein occurs in certain cell types as either an intracellular, nuclear protein or a secreted protein. The nuclear form, known as structural maintenance of chromosomes 3, is a component of the multimeric cohesin complex that holds together sister chromatids during mitosis, enabling proper chromosome segregation. Post-translational modification of the encoded protein by the addition of chondroitin sulfate chains gives rise to the secreted proteoglycan bamacan, an abundant basement membrane protein.

Application Notes

Optimal dilution of the SMC3 antibody should be determined by the researcher.

Immunogen

Amino acids ELLESADKFGYGVKFRNKVSHIDVITAEMAKDFVEDDTTH of human SMC3 were used as the immunogen for the SMC3 antibody.

Storage

After reconstitution, the SMC3 antibody can be stored for up to one month at 4°C. For long-term, aliquot and store at -20°C. Avoid repeated freezing and thawing.