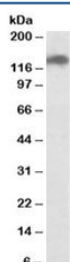


SMC2 Antibody (R35933)

Catalog No.	Formulation	Size
R35933-100UG	0.5 mg/ml in 1X TBS, pH7.3, with 0.5% BSA (US sourced) and 0.02% sodium azide	100 ug

[Bulk quote request](#)

Availability	1-3 business days
Species Reactivity	Human
Format	Antigen affinity purified
Host	Goat
Clonality	Polyclonal (goat origin)
Isotype	Goat Ig
Purity	Antigen affinity
Gene ID	10592
Applications	Western Blot : 0.2-0.6ug/ml ELISA (peptide) LOD : 1:32000
Limitations	This SMC2 antibody is available for research use only.



Western blot testing of HeLa lysate with SMC2 antibody at 0.2ug/ml. Predicted molecular weight: ~136kDa.

Description

Additional name(s) for this target protein: Structural maintenance of chromosomes 2; CAPE; CAP-E

Application Notes

Optimal dilution of the SMC2 antibody should be determined by the researcher.

Immunogen

Amino acids SKAKPPKGAHVEV were used as the immunogen for this SMC2 antibody.

Storage

Aliquot and store the SMC2 antibody at -20oC.