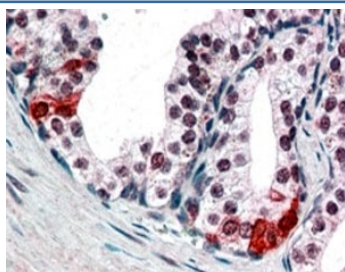


SMARCE1 Antibody (R35103)

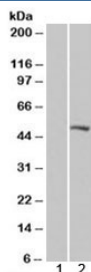
Catalog No.	Formulation	Size
R35103-100UG	0.5 mg/ml in 1X TBS, pH7.3, with 0.5% BSA (US sourced) and 0.02% sodium azide	100 ug

[Bulk quote request](#)

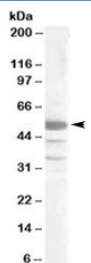
Availability	1-3 business days
Species Reactivity	Human
Predicted Reactivity	Mouse
Format	Antigen affinity purified
Host	Goat
Clonality	Polyclonal (goat origin)
Isotype	Goat Ig
Purity	Antigen affinity
Gene ID	6605
Applications	Western Blot : 0.2-1ug/ml Immunohistochemistry (FFPE) : 3-5ug/ml ELISA (peptide) LOD : 1:16000
Limitations	This SMARCE1 antibody is available for research use only.



IHC testing of FFPE human prostate shows nuclear staining in secretory epithelial cells. SMARCE1 antibody was used at 3ug/ml.



Western blot of HEK293 lysate overexpressing BAF57/SMARCE1 probed with SMARCE1 antibody at 0.2ug/ml [mock transfection in lane 1]. Predicted molecular weight: ~47kDa.



Western blot testing of Jurkat lysate with SMARCE1 antibody at 0.2ug/ml. Predicted molecular weight: ~47kDa.

Description

Additional name(s) for this target protein: SWI/SNF related, matrix associated, actin dependent regulator of chromatin, subfamily e, member 1; BRG1-associated factor 57; BAF57

Application Notes

Optimal dilution of the SMARCE1 antibody should be determined by the researcher.

Immunogen

Amino acids PPTDPIPEDEKKE were used as the immunogen for this SMARCE1 antibody.

Storage

Aliquot and store the SMARCE1 antibody at -20oC.