

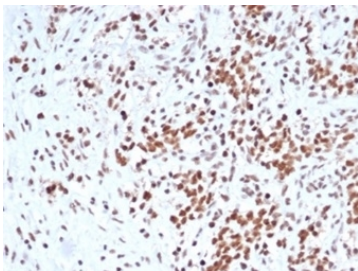
SMARCB1 Antibody / Integrase interactor 1 / INI1 / BAF47 [clone rSMARCB1/4588] (V9581)

Catalog No.	Formulation	Size
V9581-100UG	0.2 mg/ml in 1X PBS with 0.1 mg/ml BSA (US sourced), 0.05% sodium azide	100 ug
V9581-20UG	0.2 mg/ml in 1X PBS with 0.1 mg/ml BSA (US sourced), 0.05% sodium azide	20 ug
V9581SAF-100UG	1 mg/ml in 1X PBS; BSA free, sodium azide free	100 ug

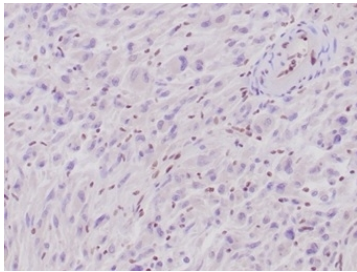
Recombinant **MOUSE MONOCLONAL**

[Bulk quote request](#)

Availability	1-3 business days
Species Reactivity	Human
Format	Purified
Clonality	Recombinant Mouse Monoclonal
Isotype	Mouse IgG1, kappa
Clone Name	rSMARCB1/4588
Purity	Protein A/G affinity
UniProt	Q12824
Localization	Nucleus
Applications	Immunohistochemistry (FFPE) : 1-2ug/ml
Limitations	This SMARCB1 antibody is available for research use only.



IHC staining of FFPE human Ewing sarcoma with SMARCB1 antibody (clone rSMARCB1/4588). HIER: boil tissue sections in pH 9 10mM Tris with 1mM EDTA for 20 min and allow to cool before testing.



IHC staining of FFPE human epithelioid sarcoma tissue with SMARCB1 antibody (clone rSMARCB1/4588). Note loss of nuclear expression in tumor cells and retained positivity in normal cells. HIER: boil tissue sections in pH 9 10mM Tris with 1mM EDTA for 20 min and allow to cool before testing.

Description

The SMARCB1 gene, which encodes a functionally uncharacterized protein component of the hSWI/SNF chromatin remodeling complex, is often mutated or deleted in malignant rhabdoid tumor (MRT). Two isoforms of INI-1, that differ by the variable inclusion of amino acids, potentially are produced by differential RNA splicing. The morphology of MRTs can present challenges in differential diagnosis. The overall survival of MRTs relative to its potential mimics (medulloblastoma, supratentorial primitive neuroectodermal tumors (sPNETs)) is quite low, and thus differentiation from these other tumors is desirable. Lack of nuclear labeling by anti-INI-1 is characteristic of MRT. The majority of medulloblastomas and sPNETs are labeled by anti-INI-1. MRTs also originate from the kidney and soft tissues.

Application Notes

Optimal dilution of the SMARCB1 antibody should be determined by the researcher.

Immunogen

A portion of amino acids 257-359 was used as the immunogen for the SMARCB1 antibody.

Storage

Aliquot the SMARCB1 antibody and store frozen at -20°C or colder. Avoid repeated freeze-thaw cycles.