

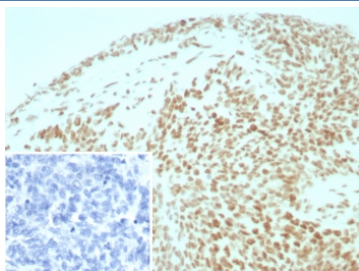
SMARCB1 Antibody / Integrase interactor 1 / BAF47 [clone INI1/8935R] (V4863)

Catalog No.	Formulation	Size
V4863-100UG	0.2 mg/ml in 1X PBS with 0.1 mg/ml BSA (US sourced), 0.05% sodium azide	100 ug
V4863-20UG	0.2 mg/ml in 1X PBS with 0.1 mg/ml BSA (US sourced), 0.05% sodium azide	20 ug
V4863SAF-100UG	1 mg/ml in 1X PBS; BSA free, sodium azide free	100 ug

Recombinant **RABBIT MONOCLONAL**

[Bulk quote request](#)

Availability	1-3 business days
Species Reactivity	Human
Format	Purified
Host	Rabbit
Clonality	Recombinant Rabbit Monoclonal
Isotype	Rabbit IgG, kappa
Clone Name	INI1/8935R
Purity	Protein A/G affinity
UniProt	Q12824
Localization	Nucleus
Applications	Immunohistochemistry (FFPE) : 1-2ug/ml for 30 min at RT
Limitations	This SMARCB1 antibody is available for research use only.



IHC staining of FFPE human ovarian cancer tissue with SMARCB1 antibody (clone INI1/8935R) Inset: PBS used in place of primary Ab (secondary Ab negative control).
HIER: boil tissue sections in pH 9 10mM Tris with 1mM EDTA for 20 min and allow to cool before testing.

Description

The INI-1 gene, which encodes a functionally uncharacterized protein component of the hSWI/SNF chromatin remodeling

complex, is often mutated or deleted in malignant rhabdoid tumor (MRT). Two isoforms of INI-1, that differ by the variable inclusion of amino acids, potentially are produced by differential RNA splicing. The morphology of MRTs can present challenges in differential diagnosis. The overall survival of MRTs relative to its potential mimics (medulloblastoma, supratentorial primitive neuroectodermal tumors (sPNETs) is quite low, and thus differentiation from these other tumors is desirable. Lack of nuclear labeling by anti-INI-1 is characteristic of MRT. The majority of medulloblastomas and sPNETs are labeled by anti-INI-1. MRTs also originate from the kidney and soft tissues.

Application Notes

Optimal dilution of the SMARCB1 antibody should be determined by the researcher.

Immunogen

Recombinant full-length human SMARCB1 protein was used as the immunogen for the SMARCB1 antibody.

Storage

Aliquot the SMARCB1 antibody and store frozen at -20oC or colder. Avoid repeated freeze-thaw cycles.