

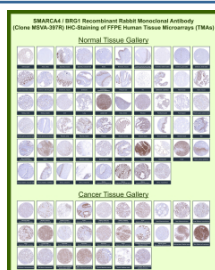
SMARCA4 Antibody / SWI/SNF related matrix associated actin dependent regulator of chromatin subfamily A member 4 [clone MSVA-397R] (V6113)

Catalog No.	Formulation	Size
V6113-100UG	Antibody in 1X PBS with 0.05% BSA, 0.05% sodium azide	100 ug
V6113-20UG	Antibody in 1X PBS with 0.05% BSA, 0.05% sodium azide	20 ug

Recombinant **RABBIT MONOCLONAL**

[Bulk quote request](#)

Species Reactivity	Human
Format	Purified
Host	Rabbit
Clonality	Recombinant Rabbit Monoclonal
Isotype	Rabbit IgG, kappa
Clone Name	MSVA-397R
UniProt	P51532
Localization	Nucleus
Applications	Immunohistochemistry (FFPE) : 1-2ug/ml
Limitations	This SMARCA4/SWI/SNF related matrix associated actin dependent regulator of chromatin subfamily A member 4 antibody is available for research use only.



Transcription activator BRG1 Rabbit Recombinant Monoclonal Antibody (MSVA-397R) tested on many normal and cancer tissues. The immunohistochemistry staining in these tissues aligns with the expression data in Human Protein Atlas.

Manual Protocol: Freshly cut sections should be used (less than 10 days between cutting and staining). Heat-induced antigen retrieval for 5 minutes in an autoclave at 121°C in pH 7.8 Target Retrieval Solution buffer. Apply the antibody at a dilution of 1:150 at 37°C for 60 minutes. Visualization of bound antibody by the EnVision Kit (Dako, Agilent) according to the manufacturer's directions.

Application Notes

- Optimal dilution of the SMARCA4/SWI/SNF related matrix associated actin dependent regulator of chromatin subfamily A member 4 antibody should be determined by the researcher.
- This SMARCA4/SWI/SNF related matrix associated actin dependent regulator of chromatin subfamily A member 4

antibody is recombinantly produced by expression in human HEK293 cells.

Immunogen

A recombinant fragment (around amino acids 200-400) of human SMARCA4 protein (exact sequence is proprietary) was used as the immunogen for the SMARCA4/SWI/SNF related matrix associated actin dependent regulator of chromatin subfamily A member 4 antibody.

Storage

SMARCA4/SWI/SNF related matrix associated actin dependent regulator of chromatin subfamily A member 4 antibody with sodium azide - store at 2 to 8°C; antibody without sodium azide - store at -20 to -80°C.