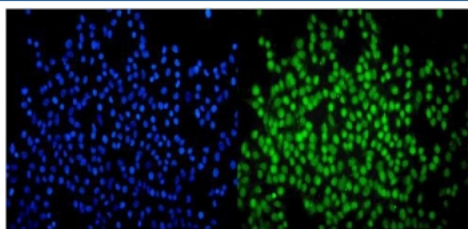


## SMARCA2 Antibody [clone 4E8.] (RQ5655)

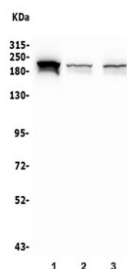
Catalog No.	Formulation	Size
RQ5655	0.5mg/ml if reconstituted with 0.2ml sterile DI water	100 ug

**Bulk quote request**

<b>Availability</b>	1-3 business days
<b>Species Reactivity</b>	Human
<b>Format</b>	Antigen affinity purified
<b>Clonality</b>	Monoclonal
<b>Isotype</b>	Mouse IgG2b
<b>Clone Name</b>	4E8.
<b>Purity</b>	Affinity purified
<b>Buffer</b>	Lyophilized from 1X PBS with 2% Trehalose and 0.025% sodium azide
<b>UniProt</b>	P51531
<b>Applications</b>	Western Blot : 0.5-1ug/ml Immunofluorescence : 2-4ug/ml
<b>Limitations</b>	This SMARCA2 antibody is available for research use only.



Immunofluorescent staining of FFPE human A549 cells with SMARCA2 antibody (green) and DAPI nuclear stain (blue). HIER: steam section in pH6 citrate buffer for 20 min.



Western blot testing of human 1) HeLa, 2) ThP-1 and 3) U-87 MG lysate with SMARCA2 antibody. Predicted molecular weight ~181 kDa.

## Description

Probable global transcription activator SNF2L2 is a protein that in humans is encoded by the SMARCA2 gene. It is mapped to 9p24.3. The protein encoded by this gene is a member of the SWI/SNF family of proteins and is highly similar to the brahma protein of *Drosophila*. Members of this family have helicase and ATPase activities and are thought to regulate transcription of certain genes by altering the chromatin structure around those genes. The encoded protein is part of the large ATP-dependent chromatin remodeling complex SNF/SWI, which is required for transcriptional activation of genes normally repressed by chromatin. Alternatively spliced transcript variants encoding different isoforms have been found for this gene, which contains a trinucleotide repeat (CAG) length polymorphism.

## Application Notes

Optimal dilution of the SMARCA2 antibody should be determined by the researcher.

## Immunogen

Recombinant human protein (amino acids Q181-N624) was used as the immunogen for the SMARCA2 antibody.

## Storage

After reconstitution, the SMARCA2 antibody can be stored for up to one month at 4°C. For long-term, aliquot and store at -20°C. Avoid repeated freezing and thawing.