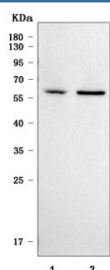


SMAP1 Antibody / Stromal membrane-associated protein 1 (RQ7711)

Catalog No.	Formulation	Size
RQ7711	0.5mg/ml if reconstituted with 0.2ml sterile DI water	100 ug

Bulk quote request

Availability	1-3 business days
Species Reactivity	Human
Format	Antigen affinity purified
Clonality	Polyclonal (rabbit origin)
Isotype	Rabbit IgG
Purity	Antigen affinity purified
Buffer	Lyophilized from 1X PBS with 2% Trehalose
UniProt	Q8IYB5
Applications	Western Blot : 0.5-1ug/ml Direct ELISA : 0.1-0.5ug/ml
Limitations	This SMAP1 antibody is available for research use only.



Western blot testing of human 1) A431 and 2) 293T cell lysate with SMAP1 antibody.
Predicted molecular weight ~50 kDa, commonly observed at 50-60 kDa.

Description

Stromal membrane-associated protein 1 is a protein that in humans is encoded by the SMAP1 gene. The protein encoded by this gene is similar to the mouse stromal membrane-associated protein-1. This similarity suggests that this human gene product is also a type II membrane glycoprotein involved in the erythropoietic stimulatory activity of stromal cells. Alternate splicing results in multiple transcript variants encoding different isoforms.

Application Notes

Optimal dilution of the SMAP1 antibody should be determined by the researcher.

Immunogen

E. coli-derived recombinant human protein (amino acids K126-Q416) was used as the immunogen for the SMAP1 antibody.

Storage

After reconstitution, the SMAP1 antibody can be stored for up to one month at 4oC. For long-term, aliquot and store at -20oC. Avoid repeated freezing and thawing.