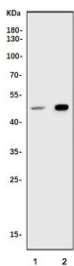


## SMAD7 Antibody / MADH7 (RQ6339)

Catalog No.	Formulation	Size
RQ6339	0.5mg/ml if reconstituted with 0.2ml sterile DI water	100 ug

[Bulk quote request](#)

<b>Availability</b>	1-3 business days
<b>Species Reactivity</b>	Human
<b>Format</b>	Purified
<b>Host</b>	Rabbit
<b>Clonality</b>	Polyclonal (rabbit origin)
<b>Isotype</b>	Rabbit IgG
<b>Purity</b>	Antigen affinity purified
<b>Buffer</b>	Lyophilized from 1X PBS with 2% Trehalose
<b>UniProt</b>	O15105
<b>Applications</b>	Western Blot : 0.5-1ug/ml Direct ELISA : 0.1-0.5ug/ml
<b>Limitations</b>	This SMAD7 antibody is available for research use only.



Western blot testing of human 1) K562 and 2) HEK293 cell lysate with SMAD7 antibody.  
Expected molecular weight: 45-55 kDa.

## Description

Mothers against decapentaplegic homolog 7 or SMAD7 is a protein that in humans is encoded by the SMAD7 gene. The protein encoded by this gene is a nuclear protein that binds the E3 ubiquitin ligase SMURF2. Upon binding, this complex translocates to the cytoplasm, where it interacts with TGF-beta receptor type-1 (TGFBR1), leading to the degradation of both the encoded protein and TGFBR1. Expression of this gene is induced by TGFBR1. Variations in this gene are a cause of susceptibility to colorectal cancer type 3 (CRCS3). Several transcript variants encoding different isoforms have been found for this gene.

## Application Notes

Optimal dilution of the SMAD7 antibody should be determined by the researcher.

## Immunogen

Recombinant human protein (amino acids R353-Q388) was used as the immunogen for the SMAD7 antibody.

## Storage

After reconstitution, the SMAD7 antibody can be stored for up to one month at 4oC. For long-term, aliquot and store at -20oC. Avoid repeated freezing and thawing.