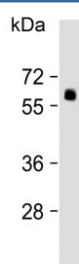


## SMAD6 Antibody (F49135)

Catalog No.	Formulation	Size
F49135-0.4ML	In 1X PBS, pH 7.4, with 0.09% sodium azide	0.4 ml
F49135-0.08ML	In 1X PBS, pH 7.4, with 0.09% sodium azide	0.08 ml

[Bulk quote request](#)

<b>Availability</b>	1-3 business days
<b>Species Reactivity</b>	Human
<b>Predicted Reactivity</b>	Mouse
<b>Format</b>	Antigen affinity purified
<b>Clonality</b>	Polyclonal (rabbit origin)
<b>Isotype</b>	Rabbit Ig
<b>Purity</b>	Antigen affinity
<b>UniProt</b>	O43541
<b>Applications</b>	Western Blot : 1:1000
<b>Limitations</b>	This SMAD6 antibody is available for research use only.



Western blot testing of human lung lysate with SMAD6 antibody. Observed molecular weight: 50~60 kDa.

## Description

SMAD6 acts as a mediator of TGF-beta and BMP antiinflammatory activity. Suppresses IL1R-TLR signaling through its direct interaction with PEL1, preventing NF-kappa-B activation, nuclear transport and NF-kappa-B-mediated expression of proinflammatory genes. May block the BMP-SMAD1 signaling pathway by competing with SMAD4 for receptor-activated SMAD1-binding. Binds to regulatory elements in target promoter regions. [UniProt]

## Application Notes

The stated application concentrations are suggested starting amounts. Titration of the SMAD6 antibody may be required

due to differences in protocols and secondary/substrate sensitivity.

## **Immunogen**

A portion of amino acids 358-386 from the human protein was used as the immunogen for this SMAD6 antibody.

## **Storage**

Store at 4oC for up to one month. For long term, aliquot the SMAD6 antibody and store frozen at -20oC or colder. Avoid repeated freeze-thaw cycles.