

SMAD3 Antibody (F52046)

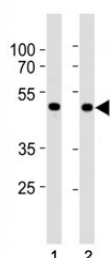
| Catalog No. | Formulation | Size |
|---------------|--|---------|
| F52046-0.4ML | In 1X PBS, pH 7.4, with 0.09% sodium azide | 0.4 ml |
| F52046-0.08ML | In 1X PBS, pH 7.4, with 0.09% sodium azide | 0.08 ml |



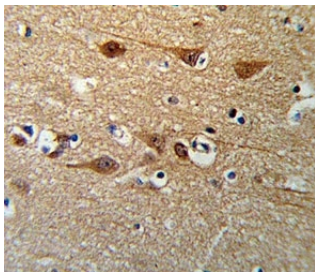
Citations (1)

[Bulk quote request](#)

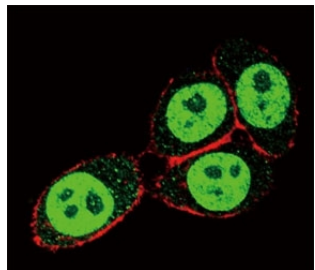
| | |
|----------------------|---|
| Availability | 1-3 business days |
| Species Reactivity | Human, Mouse |
| Predicted Reactivity | Rat, Pig, Chicken |
| Format | Antigen affinity purified |
| Clonality | Polyclonal (rabbit origin) |
| Isotype | Rabbit Ig |
| Purity | Antigen affinity |
| UniProt | P84022 |
| Applications | Western Blot : 1:1000 IHC (Paraffin) : 1:10-1:50 Immunofluorescence : 1:10-1:50 Flow Cytometry : 1:10-1:50 |
| Limitations | This SMAD3 antibody is available for research use only. |



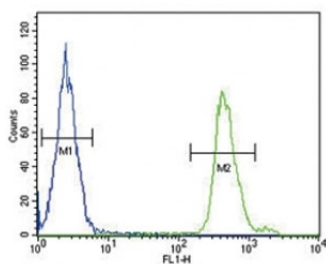
SMAD3 antibody western blot analysis in HepG2 and mouse C2C12 lysate. Observed molecular weight: 48~55 kDa.



SMAD3 antibody IHC analysis in formalin fixed and paraffin embedded brain tissue.



Confocal immunofluorescent analysis of SMAD3 antibody with HeLa cells followed by Alexa Fluor 488-conjugated goat anti-rabbit IgG (green). Actin filaments have been labeled with Alexa Fluor 555 Phalloidin (red).



SMAD3 antibody flow cytometric analysis of MDA-MB231 cells (green) compared to a negative control (blue). FITC-conjugated goat-anti-rabbit secondary Ab was used for the analysis.

Description

SMAD3 belongs to the SMAD, a family of proteins similar to the gene products of the *Drosophila* gene 'mothers against decapentaplegic' (Mad) and the *C. elegans* gene Sma. SMAD proteins are signal transducers and transcriptional modulators that mediate multiple signaling pathways. This protein functions as a transcriptional modulator activated by transforming growth factor-beta and is thought to play a role in the regulation of carcinogenesis.

Application Notes

Titration of the SMAD3 antibody may be required due to differences in protocols and secondary/substrate sensitivity.

Immunogen

A portion of amino acids 186-215 from the human protein was used as the immunogen for this SMAD3 antibody.

Storage

Aliquot the SMAD3 antibody and store frozen at -20°C or colder. Avoid repeated freeze-thaw cycles.

