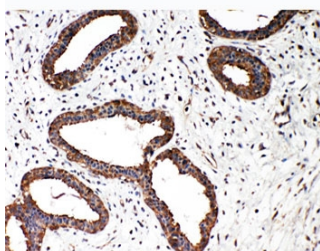


## Smad2 Antibody (R30998)

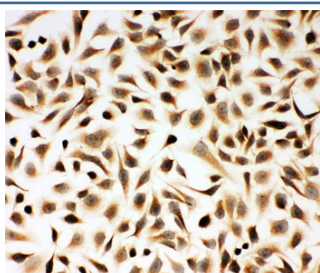
Catalog No.	Formulation	Size
R30998	0.5mg/ml if reconstituted with 0.2ml sterile DI water	100 ug

**Bulk quote request**

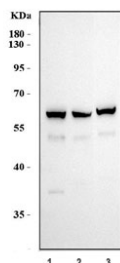
<b>Availability</b>	1-3 business days
<b>Species Reactivity</b>	Human
<b>Format</b>	Antigen affinity purified
<b>Clonality</b>	Polyclonal (rabbit origin)
<b>Isotype</b>	Rabbit Ig
<b>Purity</b>	Antigen affinity
<b>Buffer</b>	Lyophilized from 1X PBS with 2.5% BSA and 0.025% sodium azide/thimerosal
<b>UniProt</b>	Q15796
<b>Applications</b>	Western Blot : 0.5-1ug/ml Immunohistochemistry (FFPE) : 0.5-1ug/ml Immunocytochemistry : 0.5-1ug/ml
<b>Limitations</b>	This Smad2 antibody is available for research use only.



IHC-P: Smad2 antibody testing of human breast cancer tissue. HIER: steamed with pH6 citrate buffer.



ICC staining of human HeLa cells with Smad2 antibody.



Western blot testing of human 1) HeLa, 2) MCF7 and 3) MDA-MB-453 cell lysate with Smad2 antibody. Predicted molecular weight: 52~60 kDa.

## Description

SMAD family member 2, also known as MADR2, and MADH2 (Mothers against decapentaplegic homolog 2), is a protein that in humans is encoded by the SMAD2 gene. It belongs to the SMAD family of proteins similar to the gene products of the *Drosophila* gene 'mothers against decapentaplegic' (Mad) and the *C. elegans* gene 'Sma.' The gene has been mapped to 18q21.1, a region which is frequently deleted in colorectal cancers. SMAD2 mediates the signal of the transforming growth factor (TGF)-beta, and thus regulates multiple cellular processes, such as cell proliferation, apoptosis, and differentiation. This protein is recruited to the TGF-beta receptors through its interaction with the SMAD anchor for receptor activation (SARA) protein. In response to TGF-beta signal, this protein is phosphorylated by the TGF-beta receptors.

## Application Notes

The stated application concentrations are suggested starting points. Titration of the Smad2 antibody may be required due to differences in protocols and secondary/substrate sensitivity.

## Immunogen

An amino acid sequence from the N-terminus of human Smad2 (DQWDTTGLYSFSEQTRSLD) was used as the immunogen for this Smad2 antibody.

## Storage

After reconstitution, the Smad2 antibody can be stored for up to one month at 4°C. For long-term, aliquot and store at -20°C. Avoid repeated freezing and thawing.