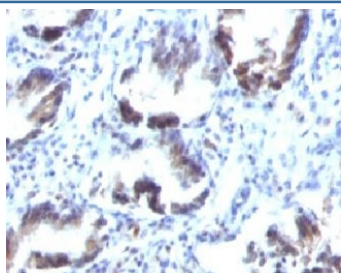


## SM22 alpha Antibody [clone SMP22a] (V7142)

Catalog No.	Formulation	Size
V7142-100UG	0.2 mg/ml in 1X PBS with 0.1 mg/ml BSA (US sourced) and 0.05% sodium azide	100 ug
V7142-20UG	0.2 mg/ml in 1X PBS with 0.1 mg/ml BSA (US sourced) and 0.05% sodium azide	20 ug
V7142SAF-100UG	1 mg/ml in 1X PBS; BSA free, sodium azide free	100 ug
V7142IHC-7ML	Prediluted in 1X PBS with 0.1 mg/ml BSA (US sourced) and 0.05% sodium azide; *For IHC use only*	7 ml

[Bulk quote request](#)

<b>Availability</b>	1-3 business days
<b>Species Reactivity</b>	Human
<b>Format</b>	Purified
<b>Clonality</b>	Monoclonal (mouse origin)
<b>Isotype</b>	Mouse IgG1, kappa
<b>Clone Name</b>	SMP22a
<b>Purity</b>	Protein G affinity chromatography
<b>UniProt</b>	Q01995
<b>Localization</b>	Cytoplasmic
<b>Applications</b>	Immunohistochemistry (FFPE) : 1-2ug/ml for 30 min at RT (1) Prediluted IHC Only Format : incubate for 30 min at RT (2)
<b>Limitations</b>	This SM22 alpha antibody is available for research use only.



IHC testing of FFPE human colon carcinoma with SM22 alpha antibody (clone SMP22a).

## Description

SM22/Transgelin is expressed abundantly in smooth muscle cells. The human transgelin gene encodes a 201 amino acid protein that contains nuclear factor-binding motifs known to regulate transcription in smooth muscle. During embryogenesis, transgelin is expressed in smooth, cardiac and skeletal muscle, but is restricted during late fetal development and adulthood to all vascular and visceral smooth muscle cells and low levels of expression in heart.

## Application Notes

Titering of the SM22 alpha antibody may be required for optimal performance.

1. Staining of formalin-fixed tissues requires boiling tissue sections in 10mM Tris with 1mM EDTA, pH 9.0, for 10-20 min followed by cooling at RT for 20 min.
2. The prediluted format is supplied in a dropper bottle and is optimized for use in IHC. After epitope retrieval step (if required), drip mAb solution onto the tissue section and incubate at RT for 30 min.
3. Cross-reaction with SM22 beta protein has not been determined.

## Immunogen

Recombinant full-length human protein was used as the immunogen for the SM22 alpha antibody. (3)

## Storage

Store the SM22 alpha antibody at 2-8°C (with azide) or aliquot and store at -20°C or colder (without azide).