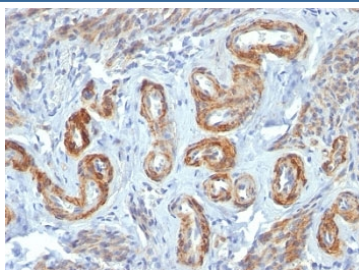


SM-MHC Antibody [clone ID8] (V2750)

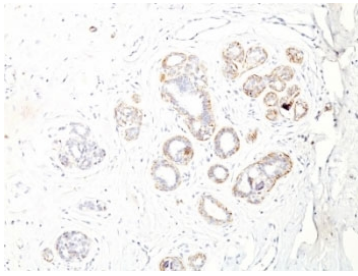
Catalog No.	Formulation	Size
V2750-100UG	0.2 mg/ml in 1X PBS with 0.1 mg/ml BSA (US sourced) and 0.05% sodium azide	100 ug
V2750-20UG	0.2 mg/ml in 1X PBS with 0.1 mg/ml BSA (US sourced) and 0.05% sodium azide	20 ug
V2750SAF-100UG	1 mg/ml in 1X PBS; BSA free, sodium azide free	100 ug
V2750IHC-7ML	Prediluted in 1X PBS with 0.1 mg/ml BSA (US sourced) and 0.05% sodium azide; *For IHC use only*	7 ml

[Bulk quote request](#)

Availability	1-3 business days
Species Reactivity	Human, Rat
Format	Purified
Host	Mouse
Clonality	Monoclonal (mouse origin)
Isotype	Mouse IgG1, kappa
Clone Name	ID8
Purity	Protein G affinity chromatography
UniProt	P35749
Localization	Cytoplasmic
Applications	Flow Cytometry : 0.5-1ug/10 ⁶ cells Immunofluorescence : 0.5-1ug/ml Immunohistochemistry (FFPE) : 0.5-1ug/ml for 30 min at RT
Limitations	This SM-MHC antibody is available for research use only.



IHC: Formalin-fixed, paraffin-embedded human Leiomyosarcoma stained with SM-MHC antibody (ID8).



IHC: Formalin-fixed, paraffin-embedded human breast carcinoma stained with SM-MHC antibody (ID8).

Description

SM-MHC, or Myosin-11, is a smooth muscle myosin belonging to the myosin heavy chain family. Myosin-11 is a subunit of a hexameric protein that consists of two heavy chain subunits and two pairs of non-identical light chain subunits. It is a major contractile protein, converting chemical energy into mechanical energy through the hydrolysis of ATP. [Wiki]

Application Notes

Optimal dilution of the SM-MHC antibody should be determined by the researcher.

1. Staining of formalin/paraffin tissues requires boiling tissue sections in 10mM Citrate buffer, pH 6.0, for 10-20 min followed by cooling at RT for 20 min.
2. The prediluted format is supplied in a dropper bottle and is optimized for use in IHC. After epitope retrieval step (if required), drip mAb solution onto the tissue section and incubate at RT for 30 min.

Immunogen

Human uterus extract was used as the immunogen for the SM-MHC antibody.

Storage

Store the SM-MHC antibody at 2-8°C (with azide) or aliquot and store at -20°C or colder (without azide).