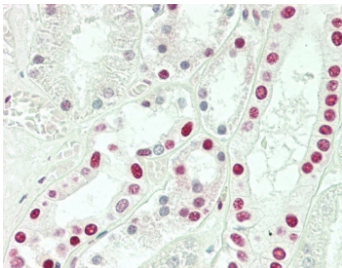


Sm-D3 Antibody / SNRPD3 (F55030)

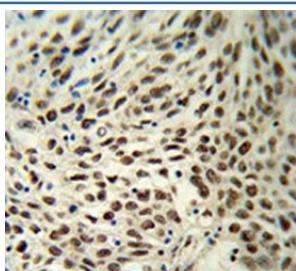
Catalog No.	Formulation	Size
F55030-0.4ML	In 1X PBS, pH 7.4, with 0.09% sodium azide	0.4 ml
F55030-0.08ML	In 1X PBS, pH 7.4, with 0.09% sodium azide	0.08 ml

[Bulk quote request](#)

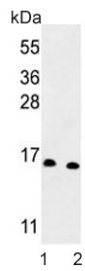
Availability	1-3 business days
Species Reactivity	Human
Format	Purified
Host	Rabbit
Clonality	Polyclonal (rabbit origin)
Isotype	Rabbit Ig
Purity	Antigen affinity purified
UniProt	P62318
Applications	Flow Cytometry : 1:25 (1x10 ⁶ cells) Immunohistochemistry (FFPE) : 1:25 Western Blot : 1:500-1:2000
Limitations	This Sm-D3 antibody is available for research use only.



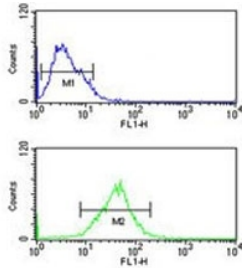
IHC testing of FFPE human kidney tissue with Sm-D3 antibody. HIER: steam section in pH6 citrate buffer for 20 min and allow to cool prior to staining.



IHC testing of FFPE human lung carcinoma tissue with Sm-D3 antibody. HIER: steam section in pH6 citrate buffer for 20 min and allow to cool prior to staining.



Western blot testing of human 1) MCF-7 and 2) Jurkat cell lysate with Sm-D3 antibody.
Predicted molecular weight ~14 kDa.



Flow cytometry testing of human MCF7 cells with Sm-D3 antibody; Blue=isotype control,
Green= Sm-D3 antibody.

Description

The protein belongs to the small nuclear ribonucleoprotein core protein family. It is required for pre-mRNA splicing and small nuclear ribonucleoprotein biogenesis.

Application Notes

The stated application concentrations are suggested starting points. Titration of the Sm-D3 antibody may be required due to differences in protocols and secondary/substrate sensitivity.

Immunogen

A portion of amino acids 99-126 from the human protein was used as the immunogen for the Sm-D3 antibody.

Storage

Aliquot the Sm-D3 antibody and store frozen at -20°C or colder. Avoid repeated freeze-thaw cycles.