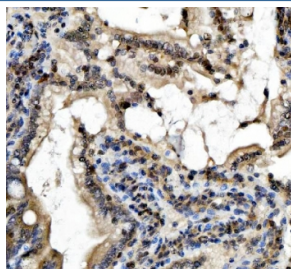


## SLUG Antibody / SNAI2 (R31818)

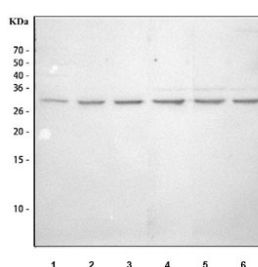
Catalog No.	Formulation	Size
R31818	0.5mg/ml if reconstituted with 0.2ml sterile DI water	100 ug

**Bulk quote request**

<b>Availability</b>	Discontinued
<b>Species Reactivity</b>	Human, Mouse, Rat
<b>Format</b>	Antigen affinity purified
<b>Host</b>	Rabbit
<b>Clonality</b>	Polyclonal (rabbit origin)
<b>Isotype</b>	Rabbit IgG
<b>Purity</b>	Antigen affinity
<b>Buffer</b>	Lyophilized from 1X PBS with 2% Trehalose
<b>UniProt</b>	O43623
<b>Applications</b>	Western Blot : 0.5-1ug/ml Immunohistochemistry (FFPE) : 2-5ug/ml
<b>Limitations</b>	This SLUG antibody is available for research use only.



IHC staining of FFPE rat colon tissue with SLUG antibody. HIER: boil tissue sections in pH8 EDTA for 20 min and allow to cool before testing.



Western blot testing of 1) human HepG2, 2) human HeLa, 3) human A431, 4) rat lung, 5) mouse lung and 6) mouse NIH 3T3 cell lysate with SLUG antibody. Predicted molecular weight ~29 kDa.

## Description

SLUG is also known as SNAI2. This gene encodes a member of the Snail family of C2H2-type zinc finger transcription factors. The encoded protein acts as a transcriptional repressor that binds to E-box motifs and is also likely to repress E-cadherin transcription in breast carcinoma. This protein is involved in epithelial-mesenchymal transitions and has antiapoptotic activity. Mutations in this gene may be associated with sporadic cases of neural tube defects.

## Application Notes

Optimal dilution of the SLUG antibody should be determined by the researcher.

## Immunogen

Amino acids KLSDPHAIEAEKFQCNLCNKTYSTFSGGLAKHKQ of human SLUG were used as the immunogen for the SLUG antibody.

## Storage

After reconstitution, the SLUG antibody can be stored for up to one month at 4°C. For long-term, aliquot and store at -20°C. Avoid repeated freezing and thawing.