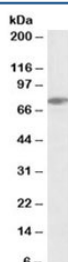


SLP76 Antibody (R33148)

Catalog No.	Formulation	Size
R33148-100UG	0.5 mg/ml in 1X TBS, pH7.3, with 0.5% BSA (US sourced) and 0.02% sodium azide	100 ug

[Bulk quote request](#)

Availability	1-3 business days
Species Reactivity	Human
Predicted Reactivity	Cow, Dog, Mouse, Pig, Rat
Format	Antigen affinity purified
Clonality	Polyclonal (goat origin)
Isotype	Goat Ig
Purity	Antigen affinity
Gene ID	3937
Applications	Western Blot : 0.3-1ug/ml ELISA (peptide) LOD : 1:32000
Limitations	This SLP76 antibody is available for research use only.



Western blot testing of Jurkat lysate with SLP76 antibody at 0.3ug/ml. Expected molecular weight: ~76kDa.

Description

Additional name(s) for this target protein: SH2 domain containing leukocyte protein of 76kDa; LCP2

Application Notes

Optimal dilution of the SLP76 antibody should be determined by the researcher.

Immunogen

Amino acids ALRNVPFRSEV were used as the immunogen for this SLP76 antibody.

Storage

Aliquot and store the SLP76 antibody at -20oC.