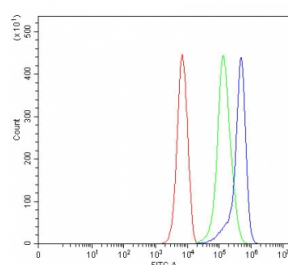


SLMAP Antibody / Sarcolemmal membrane-associated protein (RQ7699)

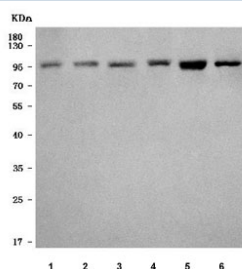
Catalog No.	Formulation	Size
RQ7699	0.5mg/ml if reconstituted with 0.2ml sterile DI water	100 ug

Bulk quote request

Availability	1-3 business days
Species Reactivity	Human, Mouse
Format	Antigen affinity purified
Clonality	Polyclonal (rabbit origin)
Isotype	Rabbit IgG
Purity	Antigen affinity purified
Buffer	Lyophilized from 1X PBS with 2% Trehalose
UniProt	Q14BN4
Applications	Western Blot : 0.5-1ug/ml Flow Cytometry : 1-3ug/million cells Direct ELISA : 0.1-0.5ug/ml
Limitations	This SLMAP antibody is available for research use only.



Flow cytometry testing of human K562 cells with SLMAP antibody at 1ug/million cells (blocked with goat sera); Red=cells alone, Green=isotype control, Blue= SLMAP antibody.



Western blot testing of 1) human A431, 2) human Caco-2, 3) human U-251, 4) human SiHa, 5) mouse heart and 6) mouse skeletal muscle tissue lysate with SLMAP antibody. Predicted molecular weight ~95 kDa.

Description

Sarcolemmal membrane-associated protein is a protein that in humans is encoded by the SLMAP gene. This gene encodes a component of a conserved striatin-interacting phosphatase and kinase complex. Striatin family complexes participate in a variety of cellular processes including signaling, cell cycle control, cell migration, Golgi assembly, and apoptosis. The protein encoded by this gene is a coiled-coil, tail-anchored membrane protein with a single C-terminal transmembrane domain that is posttranslationally inserted into membranes. Mutations in this gene are associated with Brugada syndrome, a cardiac channelopathy. Alternative splicing results in multiple transcript variants.

Application Notes

Optimal dilution of the SLMAP antibody should be determined by the researcher.

Immunogen

E. coli-derived recombinant human protein (amino acids D25-E607) was used as the immunogen for the SLMAP antibody.

Storage

After reconstitution, the SLMAP antibody can be stored for up to one month at 4°C. For long-term, aliquot and store at -20°C. Avoid repeated freezing and thawing.