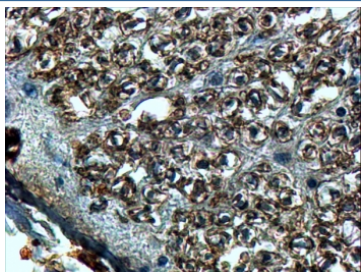


SLIT2 Antibody (R33393)

Catalog No.	Formulation	Size
R33393-100UG	0.5 mg/ml in 1X TBS, pH7.3, with 0.5% BSA (US sourced) and 0.02% sodium azide	100 ug

[Bulk quote request](#)

Availability	1-3 business days
Species Reactivity	Human
Predicted Reactivity	Dog, Mouse, Rat
Format	Antigen affinity purified
Host	Goat
Clonality	Polyclonal (goat origin)
Isotype	Goat Ig
Purity	Antigen affinity
Gene ID	9353
Applications	Immunohistochemistry (FFPE) : 4-8ug/ml ELISA (peptide) LOD : 1:1000
Limitations	This SLIT2 antibody is available for research use only.



IHC testing of FFPE human spinal cord with SLIT2 antibody at 4ug/ml. HIER: steamed with pH9 Tris/EDTA buffer, HRP-staining.

Description

Additional name(s) for this target protein: SLIL3

Application Notes

Optimal dilution of the SLIT2 antibody should be determined by the researcher.

Immunogen

Amino acids DDCQDNKCKNGAH were used as the immunogen for this SLIT2 antibody.

Storage

Aliquot and store the SLIT2 antibody at -20oC.