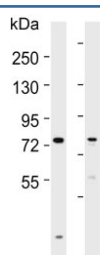


## SLCO1B3 Antibody (F54289)

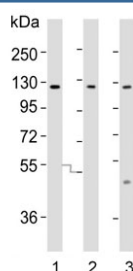
Catalog No.	Formulation	Size
F54289-0.4ML	In 1X PBS, pH 7.4, with 0.09% sodium azide	0.4 ml
F54289-0.08ML	In 1X PBS, pH 7.4, with 0.09% sodium azide	0.08 ml

[Bulk quote request](#)

<b>Availability</b>	1-3 business days
<b>Species Reactivity</b>	Human
<b>Format</b>	Purified
<b>Clonality</b>	Polyclonal (rabbit origin)
<b>Isotype</b>	Rabbit Ig
<b>Purity</b>	Antigen affinity purified
<b>UniProt</b>	Q9NPD5
<b>Applications</b>	Western Blot : 1:500-1:2000
<b>Limitations</b>	This SLCO1B3 antibody is available for research use only.



Western blot testing of human 1) liver and 2) ovary lysate with SLCO1B3 antibody. Expected molecular weight: 77-120 kDa depending on glycosylation level.



Western blot testing of human 1) HeLa, 2) PC-3 and 3) SW480 lysate with SLCO1B3 antibody. Expected molecular weight: 77-120 kDa depending on glycosylation level.

## Description

SLCO1B3 belongs to the organic anion transporter (OATP) family. OATPs are involved in the membrane transport of bile acids, conjugated steroids, thyroid hormone, eicosanoids, peptides, and numerous drugs in many tissues.

## Application Notes

The stated application concentrations are suggested starting points. Titration of the SLCO1B3 antibody may be required due to differences in protocols and secondary/substrate sensitivity.

## Immunogen

A portion of amino acids 639-668 from the human protein were used as the immunogen for the SLCO1B3 antibody.

## Storage

Aliquot the SLCO1B3 antibody and store frozen at -20oC or colder. Avoid repeated freeze-thaw cycles.