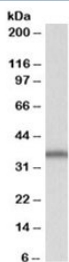


## SLC9A3R2 Antibody (isoforms b & e) (R33539)

Catalog No.	Formulation	Size
R33539-100UG	0.5 mg/ml in 1X TBS, pH7.3, with 0.5% BSA (US sourced) and 0.02% sodium azide	100 ug

[Bulk quote request](#)

<b>Availability</b>	1-3 business days
<b>Species Reactivity</b>	Human
<b>Format</b>	Antigen affinity purified
<b>Host</b>	Goat
<b>Clonality</b>	Polyclonal (goat origin)
<b>Isotype</b>	Goat Ig
<b>Purity</b>	Antigen affinity
<b>Gene ID</b>	9351
<b>Applications</b>	Western Blot : 1-3ug/ml ELISA (peptide) LOD : 1:32000
<b>Limitations</b>	This SLC9A3R2 antibody is available for research use only.



Western blot testing of Daudi lysate with SLC9A3R2 antibody at 1ug/ml. Predicted molecular weight: ~36kDa.

### Description

Additional name(s) for this target protein: Solute carrier family 9 (sodium/hydrogen exchanger), isoform 3 regulator 2

### Application Notes

Optimal dilution of the SLC9A3R2 antibody should be determined by the researcher.

1. This SLC9A3R2 antibody is specific for isoforms b and e of the protein.

## **Immunogen**

Amino acids DLPGSDKDTEESGLH were used as the immunogen for this SLC9A3R2 antibody. This sequence is common to isoforms b and e.

## **Storage**

Aliquot and store the SLC9A3R2 antibody at -20oC.