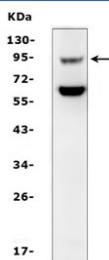


SLC9A2 Antibody (R31343)

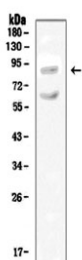
Catalog No.	Formulation	Size
R31343	0.5mg/ml if reconstituted with 0.2ml sterile DI water	100 ug

[Bulk quote request](#)

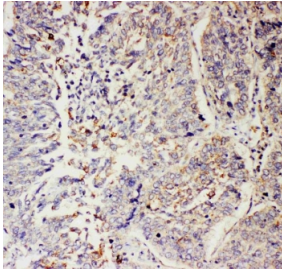
Availability	1-3 business days
Species Reactivity	Human, Mouse, Rat
Format	Antigen affinity purified
Host	Rabbit
Clonality	Polyclonal (rabbit origin)
Isotype	Rabbit IgG
Purity	Antigen affinity
Buffer	Lyophilized from 1X PBS with 2.5% BSA and 0.025% sodium azide/thimerosal
UniProt	Q9UBY0
Applications	Western Blot : 0.5-1ug/ml IHC (FFPE) : 0.5-1ug/ml
Limitations	This SLC9A2 antibody is available for research use only.



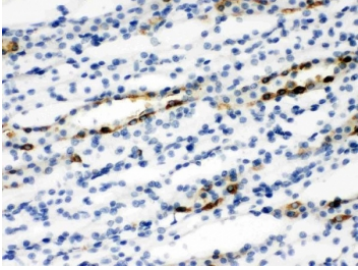
Western blot testing of mouse kidney tissue lysate with SLC9A2 antibody. Expected molecular weight ~92 kDa.



Western blot testing of rat kidney tissue lysate with SLC9A2 antibody. Expected molecular weight ~92 kDa.



IHC staining of FFPE human lung cancer tissue with SLC9A2 antibody. HIER: boil tissue sections in pH6 citrate buffer for 20 min and allow to cool before testing.



IHC staining of FFPE rat kidney tissue with SLC9A2 antibody. HIER: boil tissue sections in pH6 citrate buffer for 20 min and allow to cool before testing.

Description

Sodium-hydrogen exchanger 2, also called SLC9A2 or NHE2 is a protein that in humans is encoded by the SLC9A2 gene. The Na⁺/H⁺ exchangers (NHE) are membrane proteins involved in cell volume. This protein is found in several tissues, including intestine and kidney, and is highly expressed in villus and distal convoluted tubules. It is involved in pH regulation to eliminate acids generated by active metabolism or to counter adverse environmental conditions. It seems to play an important role in colonic sodium absorption.

Application Notes

The stated application concentrations are suggested starting amounts. Titration of the SLC9A2 antibody may be required due to differences in protocols and secondary/substrate sensitivity.

Immunogen

An amino acid sequence from the C-terminus of human SLC9A2/NHE2 (RYLSLPKNTKLPEKLQKRR) was used as the immunogen for this SLC9A2 antibody.

Storage

After reconstitution, the SLC9A2 antibody can be stored for up to one month at 4°C. For long-term, aliquot and store at -20°C. Avoid repeated freezing and thawing.