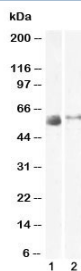


## SLC7A7 Antibody / YLAT1 (R36481)

Catalog No.	Formulation	Size
R36481-100UG	0.5 mg/ml in 1X TBS, pH7.3, with 0.5% BSA (US sourced) and 0.02% sodium azide	100 ug

[Bulk quote request](#)

<b>Availability</b>	1-3 business days
<b>Species Reactivity</b>	Human
<b>Format</b>	Antigen affinity purified
<b>Host</b>	Goat
<b>Clonality</b>	Polyclonal (goat origin)
<b>Isotype</b>	Goat Ig
<b>Purity</b>	Antigen affinity
<b>UniProt</b>	Q9UM01
<b>Applications</b>	Western Blot : 1-3ug/ml ELISA (peptide) LOD : 1:128000
<b>Limitations</b>	This SLC7A7 antibody is available for research use only.



Western blot testing of human 1) lung and 2) skeletal muscle lysate with SLC7A7 antibody at 2ug/ml. Predicted molecular weight ~56 kDa.

## Description

Solute carrier family 7 member 7, also called Y+L amino acid transporter 1 or YLAT1, is involved in the sodium-independent uptake of dibasic amino acids and sodium-dependent uptake of some neutral amino acids. Requires coexpression with SLC3A2/4F2hc to mediate the uptake of arginine, leucine and glutamine. Plays a role in nitric oxide synthesis in human umbilical vein endothelial cells (HUVECs) via transport of L-arginine. Involved in the transport of L-arginine in monocytes. [UniProt]

## Application Notes

Optimal dilution of the SLC7A7 antibody should be determined by the researcher.

## Immunogen

Amino acids SQPEVETSPLGD (N-Terminal) were used as the immunogen for this SLC7A7 antibody.

## Storage

Aliquot and store the SLC7A7 antibody at -20oC.