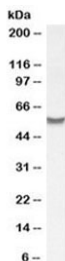


SLC7A6 Antibody / YLAT2 (R36469)

Catalog No.	Formulation	Size
R36469-100UG	0.5 mg/ml in 1X TBS, pH7.3, with 0.5% BSA (US sourced) and 0.02% sodium azide	100 ug

[Bulk quote request](#)

Availability	1-3 business days
Species Reactivity	Human
Format	Antigen affinity purified
Host	Goat
Clonality	Polyclonal (goat origin)
Isotype	Goat Ig
Purity	Antigen affinity
UniProt	Q92536
Gene ID	9057
Applications	Western Blot : 0.3-1ug/ml ELISA (peptide) LOD : 1:128000
Limitations	This SLC7A6 antibody is available for research use only.



Western blot testing of human placenta lysate with SLC7A6 antibody at 1ug/ml.
Predicted molecular weight ~57 kDa.

Description

Additional name(s) for this target protein: Solute carrier family 7 member 6; Y+L amino acid transporter 2; Y+LAT2

Application Notes

Optimal dilution of the SLC7A6 antibody should be determined by the researcher.

Immunogen

Amino acids PNTSQSQVEEDVSSP (N-Terminal) were used as the immunogen for this SLC7A6 antibody.

Storage

Aliquot and store the SLC7A6 antibody at -20°C.