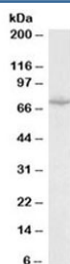


SLC6A8 Antibody (R33175)

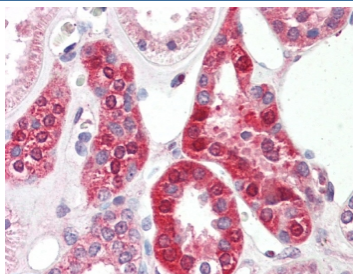
Catalog No.	Formulation	Size
R33175-100UG	0.5 mg/ml in 1X TBS, pH7.3, with 0.5% BSA (US sourced) and 0.02% sodium azide	100 ug

[Bulk quote request](#)

Availability	1-3 business days
Species Reactivity	Human, Mouse
Predicted Reactivity	Rat, Dog, Pig, Cow
Format	Antigen affinity purified
Host	Goat
Clonality	Polyclonal (goat origin)
Isotype	Goat Ig
Purity	Antigen affinity
Gene ID	6535
Localization	Intracellular, membrane
Applications	Western Blot : 0.1-0.3ug/ml IHC (FFPE) : 5ug/ml ELISA (peptide) LOD : 1:8000
Limitations	This SLC6A8 antibody is available for research use only.



Western blot testing of mouse heart lysate with SLC6A8 antibody at 0.1ug/ml. Predicted molecular weight: ~71 kDa.



IHC testing of FFPE human kidney tissue with SLC6A8 antibody at 5ug/ml. Required HIER: steamed antigen retrieval with pH6 citrate buffer; AP-staining.

Description

Additional name(s) for this target protein: Solute carrier family 6 (neurotransmitter transporter, creatine), member 8

Application Notes

Optimal dilution of the SLC6A8 antibody should be determined by the researcher.

Immunogen

Amino acids ASLANLTCDQLADRR were used as the immunogen for this SLC6A8 antibody.

Storage

Aliquot and store the SLC6A8 antibody at -20oC.