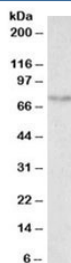


SLC6A4 Antibody / SERT / Serotonin Transporter (R34414)

Catalog No.	Formulation	Size
R34414-100UG	0.5 mg/ml in 1X TBS, pH7.3, with 0.5% BSA (US sourced) and 0.02% sodium azide	100 ug

[Bulk quote request](#)

Availability	1-3 business days
Species Reactivity	Human, Mouse
Predicted Reactivity	Cow, Rat
Format	Antigen affinity purified
Clonality	Polyclonal (goat origin)
Isotype	Goat Ig
Purity	Antigen affinity
Gene ID	6532
Localization	Cell membrane
Applications	Western Blot : 1-3ug/ml ELISA (peptide) LOD : 1:32000
Limitations	This SLC6A4 antibody is available for research use only.



Western blot testing of mouse small intestine lysate with SLC6A4 antibody at 0.5ug/ml.
Expected molecular weight: ~70/85-95kDa (unmodified/glycosylated).

Description

Additional name(s) for this target protein: Solute carrier family 6 (neurotransmitter transporter, serotonin), member 4

Application Notes

Optimal dilution of the SLC6A4 antibody should be determined by the researcher.

Immunogen

Amino acids KERIIKSITPETPT were used as the immunogen for this SLC6A4 antibody.

Storage

Aliquot and store the SLC6A4 antibody at -20oC.

References (1)