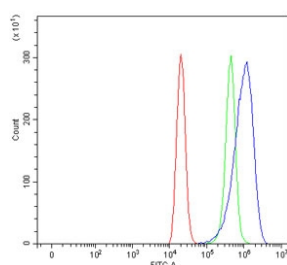


SLC6A3 Antibody / DAT (RQ6904)

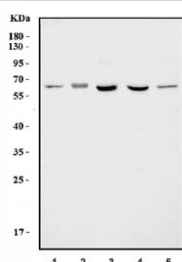
Catalog No.	Formulation	Size
RQ6904	0.5mg/ml if reconstituted with 0.2ml sterile DI water	100 ug

Bulk quote request

Availability	1-3 business days
Species Reactivity	Human
Format	Antigen affinity purified
Clonality	Polyclonal (rabbit origin)
Isotype	Rabbit IgG
Purity	Antigen affinity purified
Buffer	Lyophilized from 1X PBS with 2% Trehalose
UniProt	Q01959
Applications	Western Blot : 1-2ug/ml Flow Cytometry : 1-3ug/million cells Direct ELISA : 0.1-0.5ug/ml
Limitations	This SLC6A3 antibody is available for research use only.



Flow cytometry testing of human ThP-1 cells with SLC6A3 antibody at 1ug/million cells (blocked with goat sera); Red=cells alone, Green=isotype control, Blue= SLC6A3 antibody.



Western blot testing of human 1) 293T, 2) MCF7, 3) HepG2, 4) Caco-2 and 5) A431 cell lysate with SLC6A3 antibody. Predicted molecular weight: 68-80 kDa depending on level of glycosylation.

Description

This gene encodes a dopamine transporter which is a member of the sodium- and chloride-dependent neurotransmitter transporter family. The 3' UTR of this gene contains a 40 bp tandem repeat, referred to as a variable number tandem repeat or VNTR, which can be present in 3 to 11 copies. Variation in the number of repeats is associated with idiopathic epilepsy, attention-deficit hyperactivity disorder, dependence on alcohol and cocaine, susceptibility to Parkinson disease and protection against nicotine dependence.

Application Notes

Optimal dilution of the SLC6A3 antibody should be determined by the researcher.

Immunogen

Recombinant human protein (amino acids M1-V620) was used as the immunogen for the SLC6A3 antibody.

Storage

After reconstitution, the SLC6A3 antibody can be stored for up to one month at 4°C. For long-term, aliquot and store at -20°C. Avoid repeated freezing and thawing.