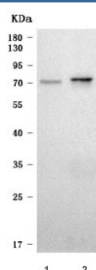


SLC6A18 Antibody / XTRP2 (RQ7679)

Catalog No.	Formulation	Size
RQ7679	0.5mg/ml if reconstituted with 0.2ml sterile DI water	100 ug

Bulk quote request

Availability	1-3 business days
Species Reactivity	Human, Rat
Format	Antigen affinity purified
Clonality	Polyclonal (rabbit origin)
Isotype	Rabbit IgG
Purity	Antigen affinity purified
Buffer	Lyophilized from 1X PBS with 2% Trehalose
UniProt	Q96N87
Applications	Western Blot : 0.5-1ug/ml Direct ELISA : 0.1-0.5ug/ml
Limitations	This SLC6A18 antibody is available for research use only.



Western blot testing of 1) human 293T and 2) rat kidney tissue lysate with SLC6A18 antibody. Predicted molecular weight ~71 kDa.

Description

Solute carrier family 6, member 18 also known as SLC6A18 is a protein which in humans is encoded by the SLC6A18 gene. The SLC6 family of proteins, which includes SLC6A18, act as specific transporters for neurotransmitters, amino acids, and osmolytes like betaine, taurine, and creatine. SLC6 proteins are sodium cotransporters that derive the energy for solute transport from the electrochemical gradient for sodium ions.

Application Notes

Optimal dilution of the SLC6A18 antibody should be determined by the researcher.

Immunogen

E. coli-derived recombinant human protein (amino acids M1-A569) was used as the immunogen for the SLC6A18 antibody.

Storage

After reconstitution, the SLC6A18 antibody can be stored for up to one month at 4°C. For long-term, aliquot and store at -20°C. Avoid repeated freezing and thawing.