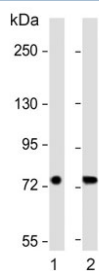


SLC6A14 Antibody (F54662)

Catalog No.	Formulation	Size
F54662-0.4ML	In 1X PBS, pH 7.4, with 0.09% sodium azide	0.4 ml
F54662-0.08ML	In 1X PBS, pH 7.4, with 0.09% sodium azide	0.08 ml

[Bulk quote request](#)

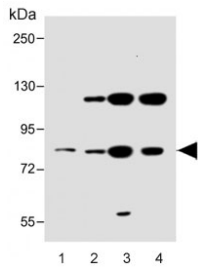
Availability	1-3 business days
Species Reactivity	Human
Format	Purified
Host	Rabbit
Clonality	Polyclonal (rabbit origin)
Isotype	Rabbit Ig
Purity	Antigen affinity purified
UniProt	Q9UN76
Applications	Immunohistochemistry (FFPE) : 1:25 Western Blot : 1:500-1:2000
Limitations	This SLC6A14 antibody is available for research use only.



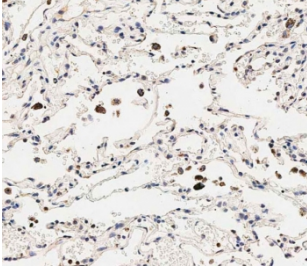
Western blot testing of human 1) breast and 2) lung lysate with SLC6A14 antibody. Predicted molecular weight ~72 kDa.



Western blot testing of human HL60 cell lysate with SLC6A14 antibody. Predicted molecular weight ~72 kDa.



Western blot testing of human 1) lung, 2) HeLa, 3) HepG2 and 4) HACAT cell lysate with SLC6A14 antibody. Predicted molecular weight ~72 kDa.



IHC testing of FFPE human lung tissue with SLC6A14 antibody. HIER: steam section in pH9 EDTA for 20 min and allow to cool prior to staining.

Description

This gene encodes a member of the solute carrier family 6. Members of this family are sodium and chloride dependent neurotransmitter transporters. The encoded protein transports both neutral and cationic amino acids. This protein may also function as a beta-alanine carrier. Mutations in this gene may be associated with X-linked obesity. A pseudogene of this gene is found on chromosome X.

Application Notes

The stated application concentrations are suggested starting points. Titration of the SLC6A14 antibody may be required due to differences in protocols and secondary/substrate sensitivity.

Immunogen

A portion of amino acids 602-631 from the human protein was used as the immunogen for the SLC6A14 antibody.

Storage

Aliquot the SLC6A14 antibody and store frozen at -20°C or colder. Avoid repeated freeze-thaw cycles.