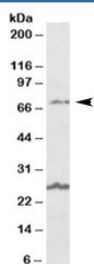


## SLC6A12 Antibody (R33267)

Catalog No.	Formulation	Size
R33267-100UG	0.5 mg/ml in 1X TBS, pH7.3, with 0.5% BSA (US sourced) and 0.02% sodium azide	100 ug

[Bulk quote request](#)

Availability	1-3 business days
Species Reactivity	Human
Format	Antigen affinity purified
Host	Goat
Clonality	Polyclonal (goat origin)
Isotype	Goat Ig
Purity	Antigen affinity
Gene ID	6539
Applications	Western Blot : 1-3ug/ml ELISA (peptide) LOD : 1:128000
Limitations	This SLC6A12 antibody is available for research use only.



Western blot testing of human olfactory bulb lysate with SLC6A12 antibody at 1ug/ml. The expected ~70kDa band and the additional ~27kDa band are both blocked by the immunizing peptide.

## Description

Additional name(s) for this target protein: Solute carrier family 6 (neurotransmitter transporter, betaine/GABA), member 12

## Application Notes

Optimal dilution of the SLC6A12 antibody should be determined by the researcher.

## **Immunogen**

Amino acids CLDGSAGRNFGPSPT were used as the immunogen for this SLC6A12 antibody.

## **Storage**

Aliquot and store the SLC6A12 antibody at -20oC.