

Slc5a1 Antibody (R34386)

Catalog No.	Formulation	Size
R34386-100UG	0.5 mg/ml in 1X TBS, pH7.3, with 0.5% BSA (US sourced) and 0.02% sodium azide	100 ug

[Bulk quote request](#)

Availability	1-3 business days
Species Reactivity	Rat
Format	Antigen affinity purified
Host	Goat
Clonality	Polyclonal (goat origin)
Isotype	Goat Ig
Purity	Antigen affinity
Gene ID	25552
Applications	Western Blot : 1-3ug/ml Immunohistochemistry (Frozen) : suitable ELISA (peptide) LOD : 1:4000
Limitations	This Slc5a1 antibody is available for research use only.

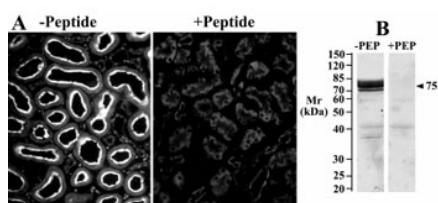
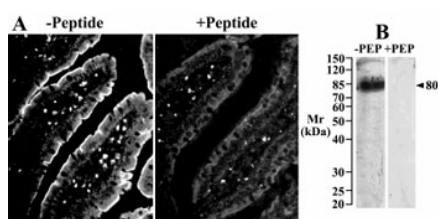


Image A: IHC staining of a rat kidney cryosection with Slc5a1 antibody at 25ug/ml (detection by CY3 fluorescence). Image B: western blot of brush-border membrane lysate from rat kidney tested with Slc5a1 antibody at 2.5ug/ml.



A) IHC staining of cryosections of rat small intestines with Slc5a1 antibody at 25ug/ml. Detection by CY3 fluorescence. B) Western blot of brush-border membranes from rat small intestines with Slc5a1 antibody at 2.5ug/ml.

Description

Additional name(s) for this target protein: Solute carrier family 5 (sodium/glucose cotransporter), member 1

Application Notes

Optimal dilution of the Slc5a1 antibody should be determined by the researcher.

Immunogen

Amino acids KDTIEIDAEAPQKEK were used as the immunogen for this Slc5a1 antibody.

Storage

Aliquot and store the Slc5a1 antibody at -20oC.